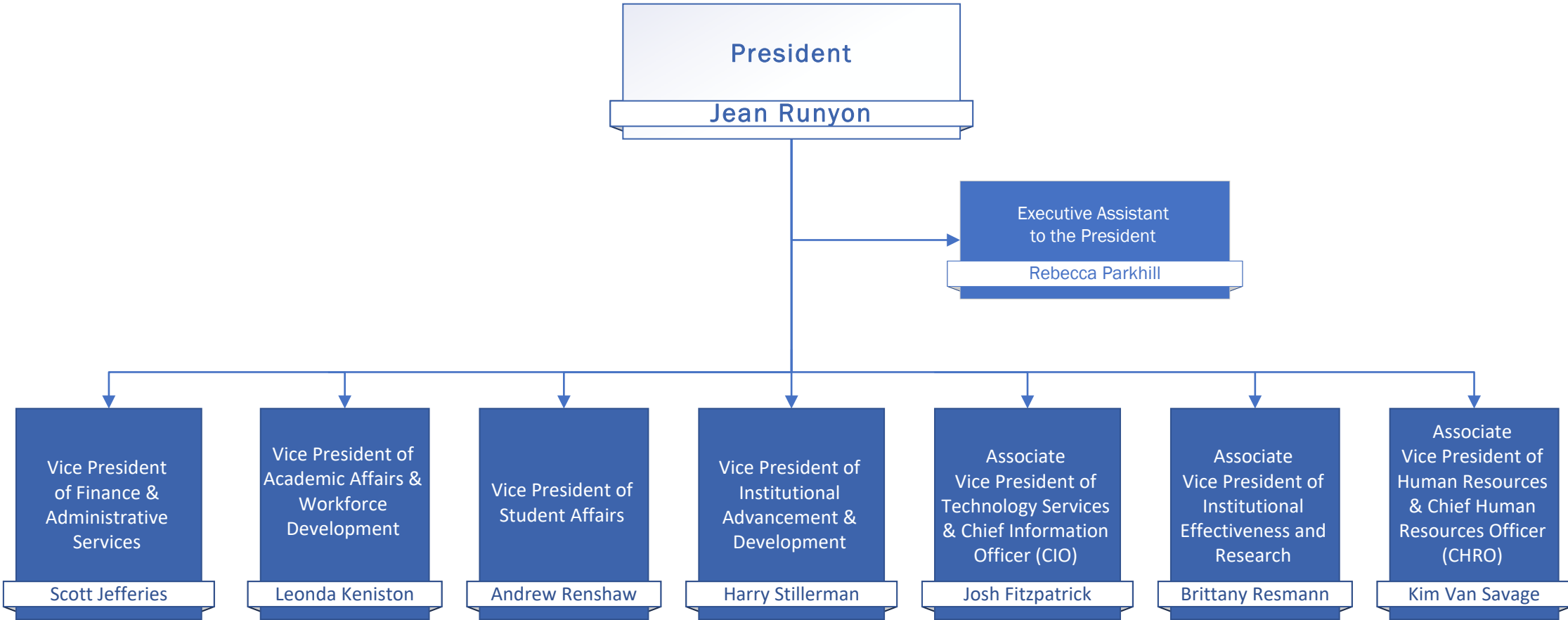
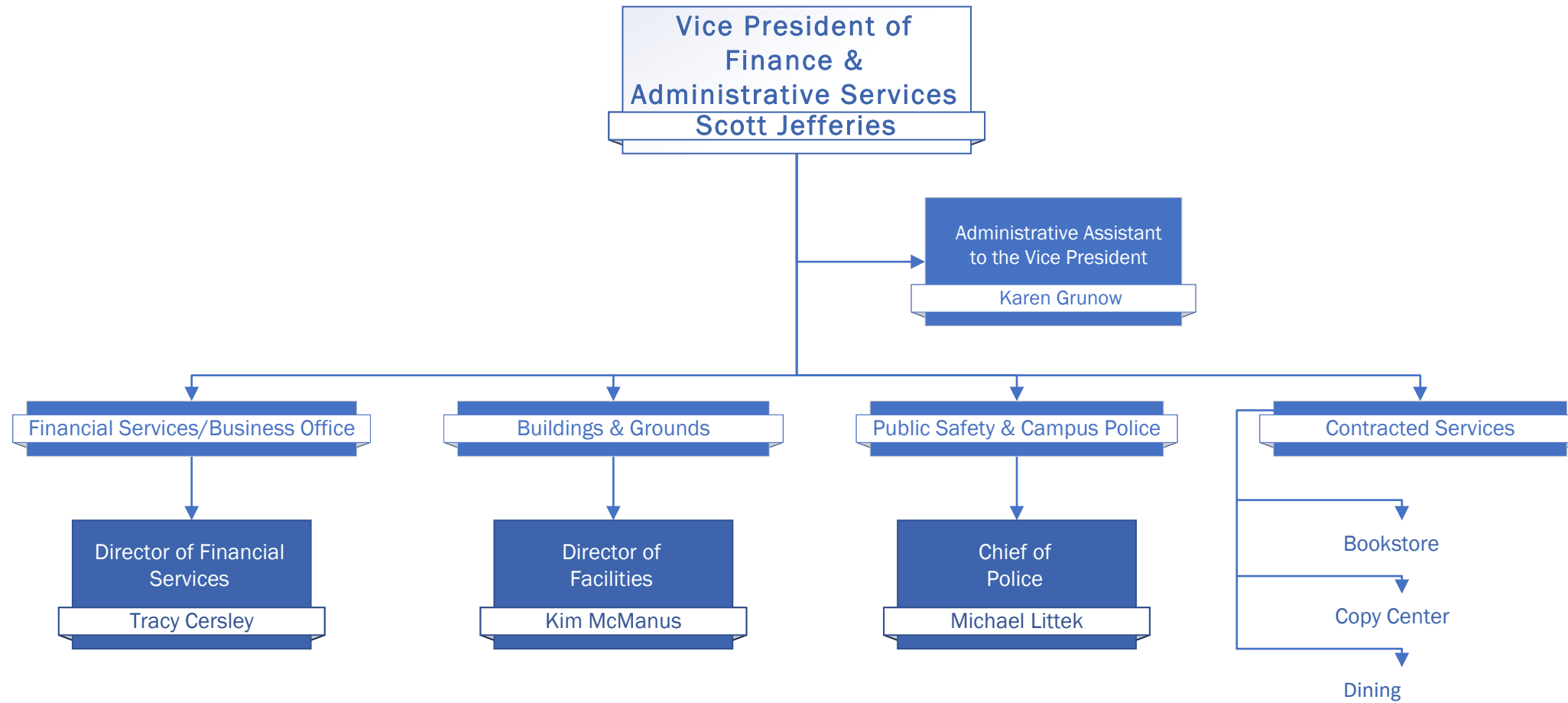


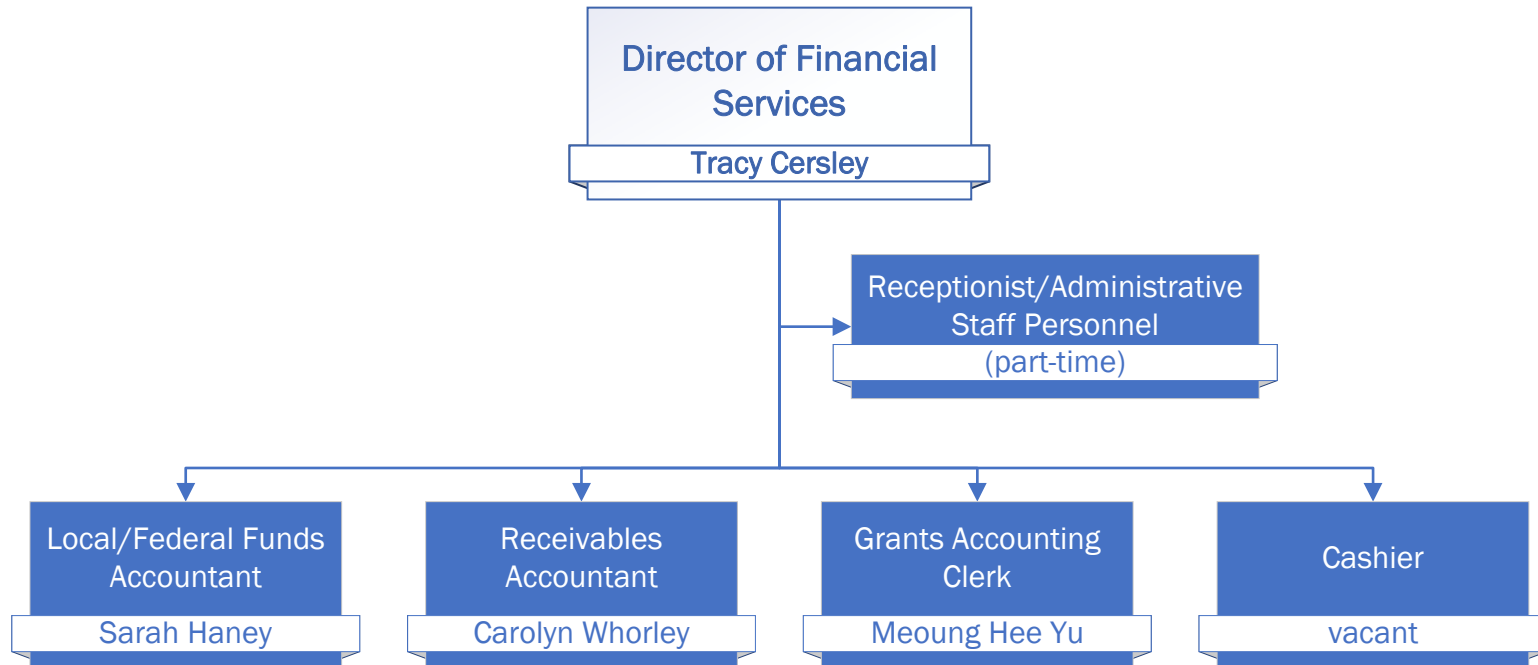
# ORGANIZATIONAL CHARTS



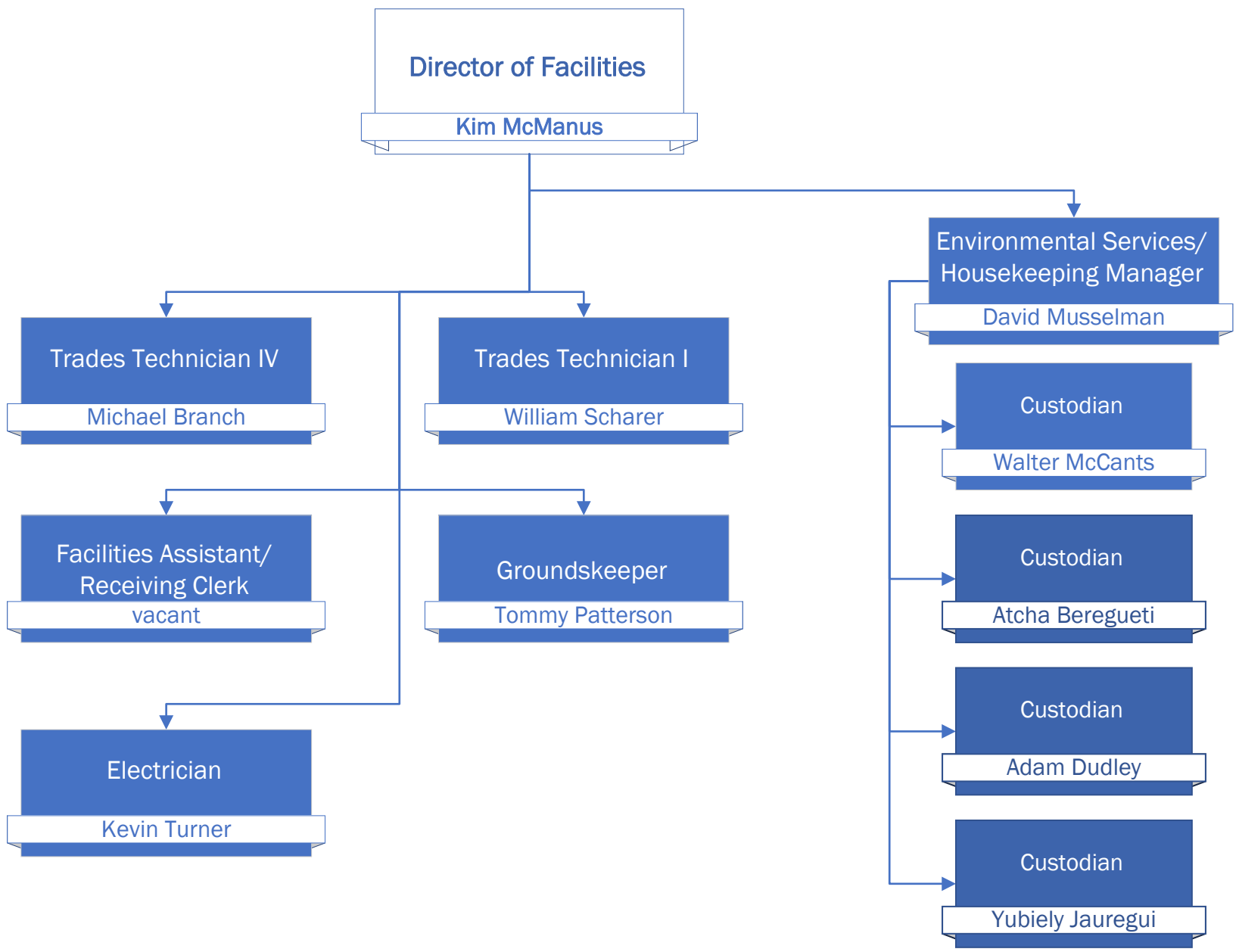


# Finance & Administrative Services

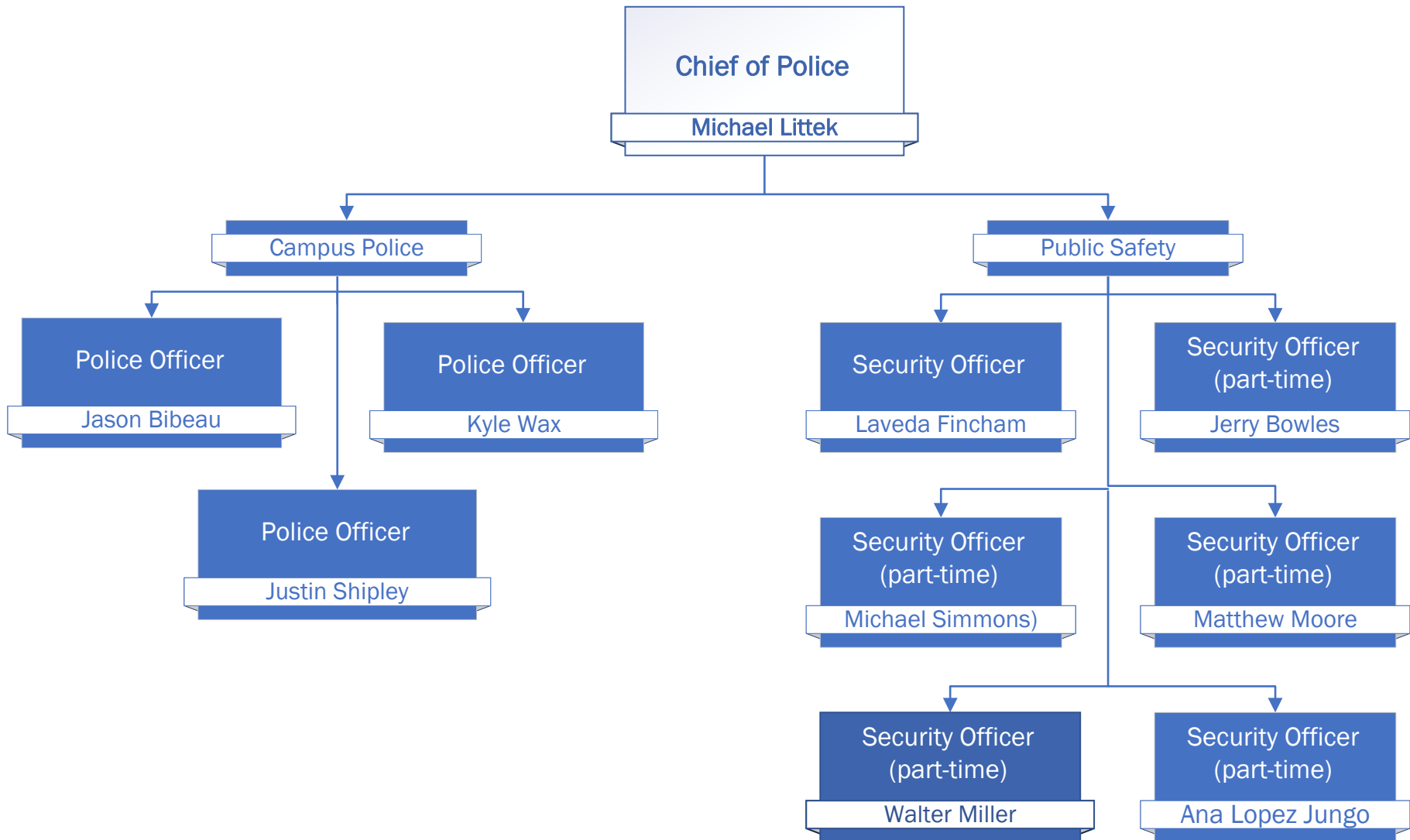




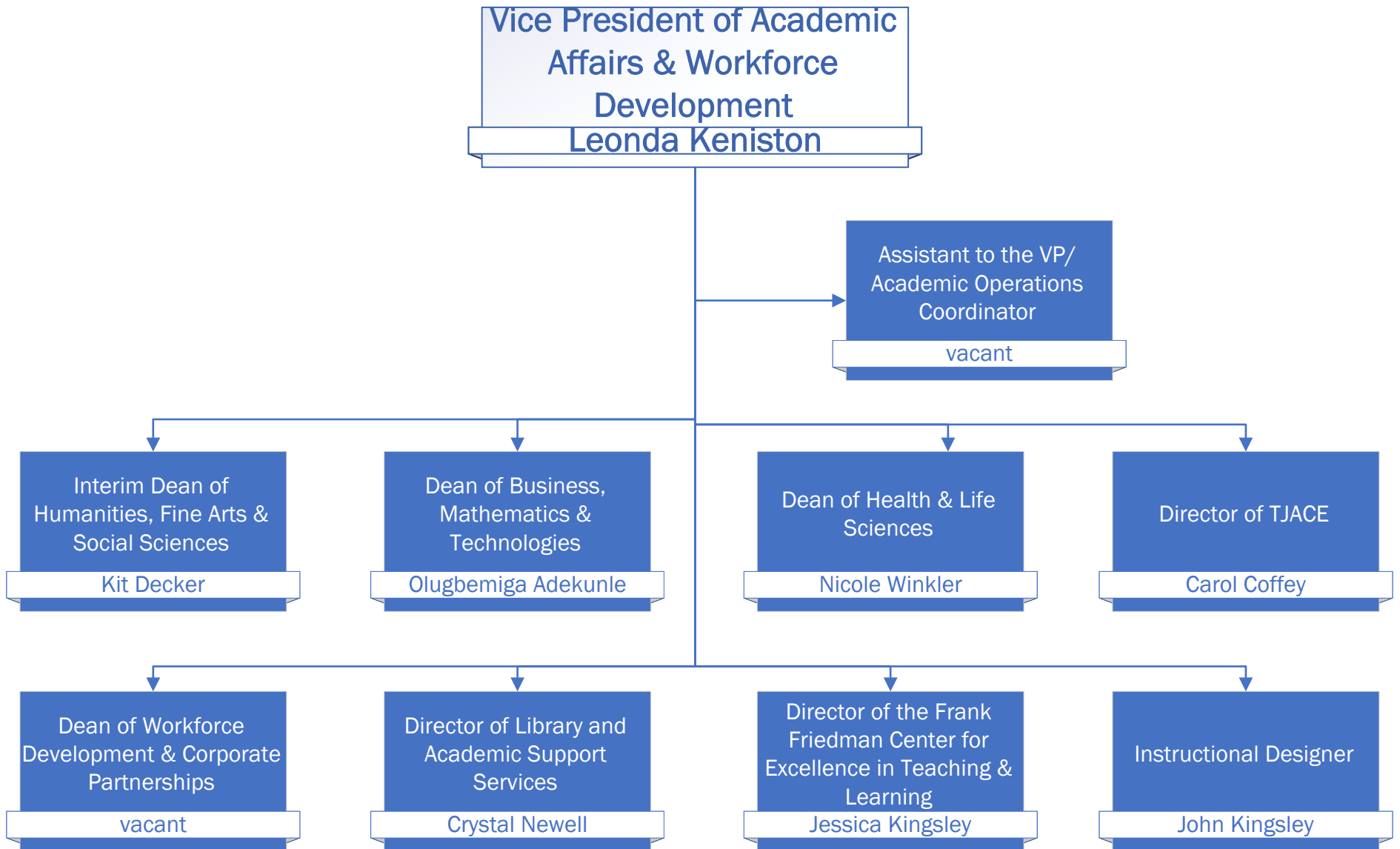
# Buildings & Grounds/Facilities



# Public Safety & Campus Police



# Academic Affairs & Workforce Development



# Humanities, Fine Arts & Social Sciences

**Interim Dean of  
Humanities, Fine Arts &  
Social Sciences  
Kit Decker**

**Administrative Assistant  
Margaret Flinn**

**Fine Arts/Humanities**

- Professor of Arts**  
Thomas Clarkson
- Associate Professor of Arts**  
Fenella Belle
- Associate Professor of Arts**  
Aaron Miller
- Associate Professor of Theater Arts**  
Brad Stoller
- Professor of Philosophy**  
John Gulley
- Faculty Adjuncts**

**Social Sciences**

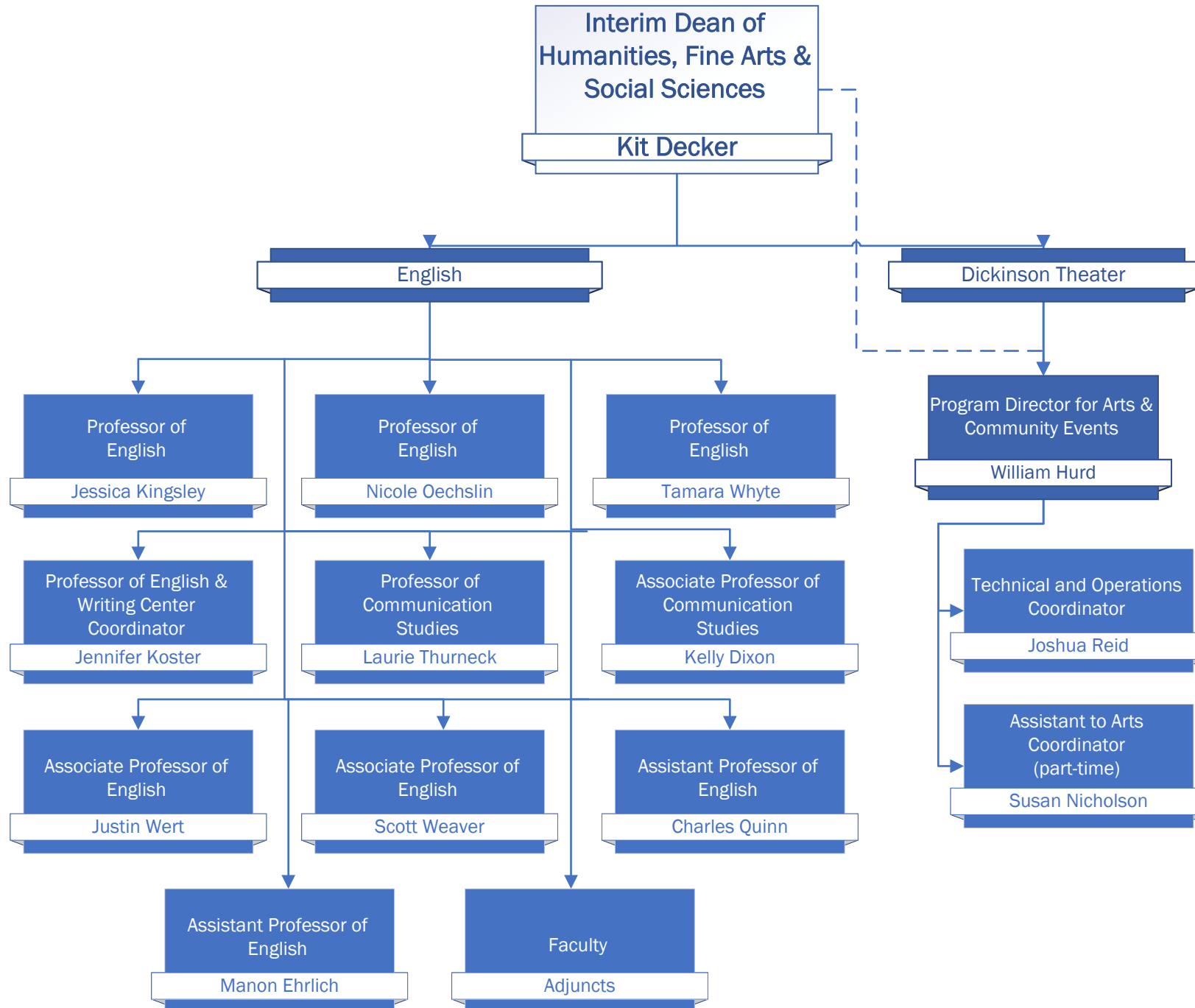
- Professor of Sociology**  
Kim Hoosier
  - Professor of History**  
Colum Leckey
    - Assistant Professor of Political Science**  
Connie Jorgensen
      - Professor of Sociology**  
Todd Platts
        - Faculty Adjuncts**
- Associate Professor of Psychology**  
Michael Rahilly
  - Associate Professor of Psychology**  
Adam Johnson
    - Associate Professor of History**  
Jennifer Tomas
      - Associate Professor of History**  
Melanie Bailey
        - Associate Professor of Economics**  
Sushma Shukla

**Language**

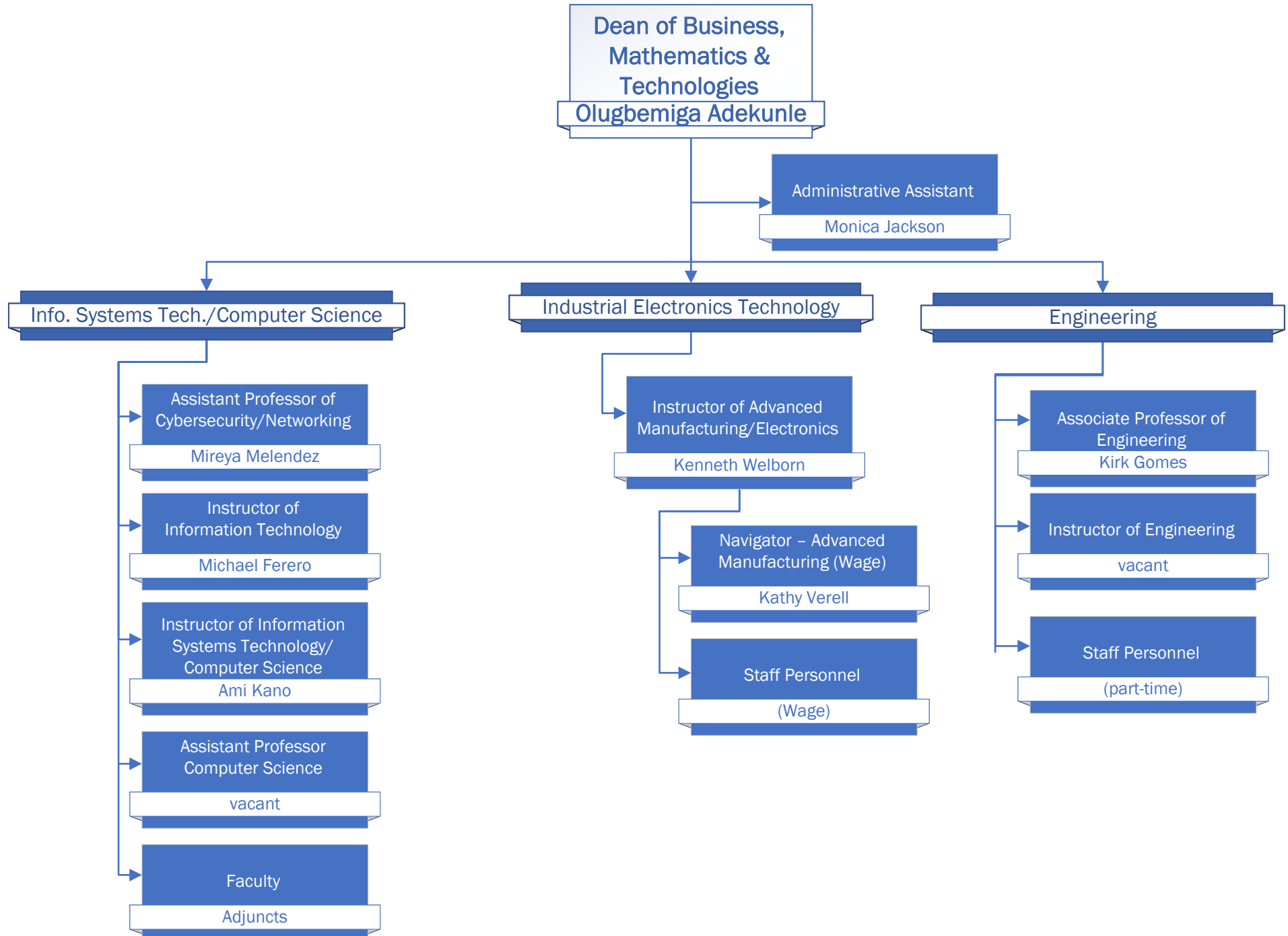
- Professor of Spanish**  
Kit Decker
- Professor of Spanish**  
Jorge Grajales-Diaz
- Assistant Professor of French**  
Kristine Swanson
- Faculty Adjuncts**



# Humanities, Fine Arts & Social Sciences

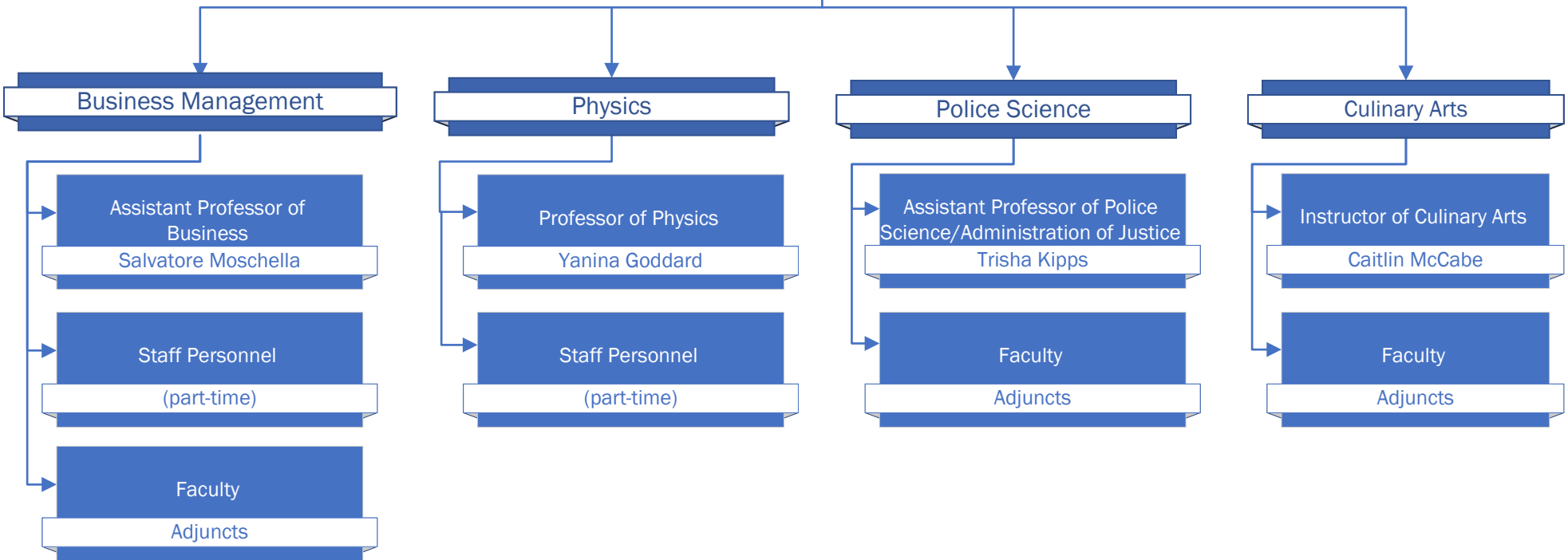


# Business, Mathematics & Technologies

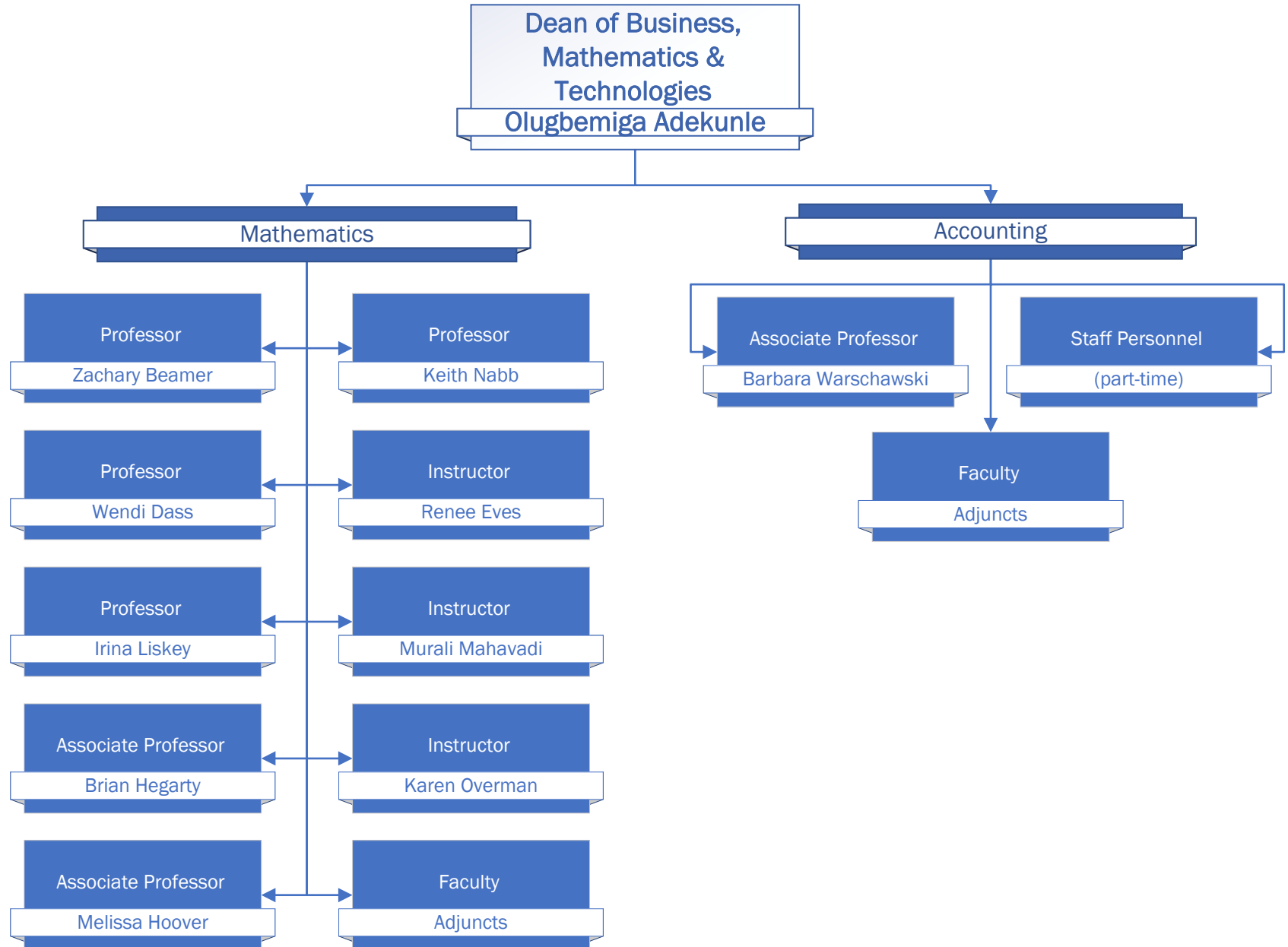


# Business, Mathematics & Technologies

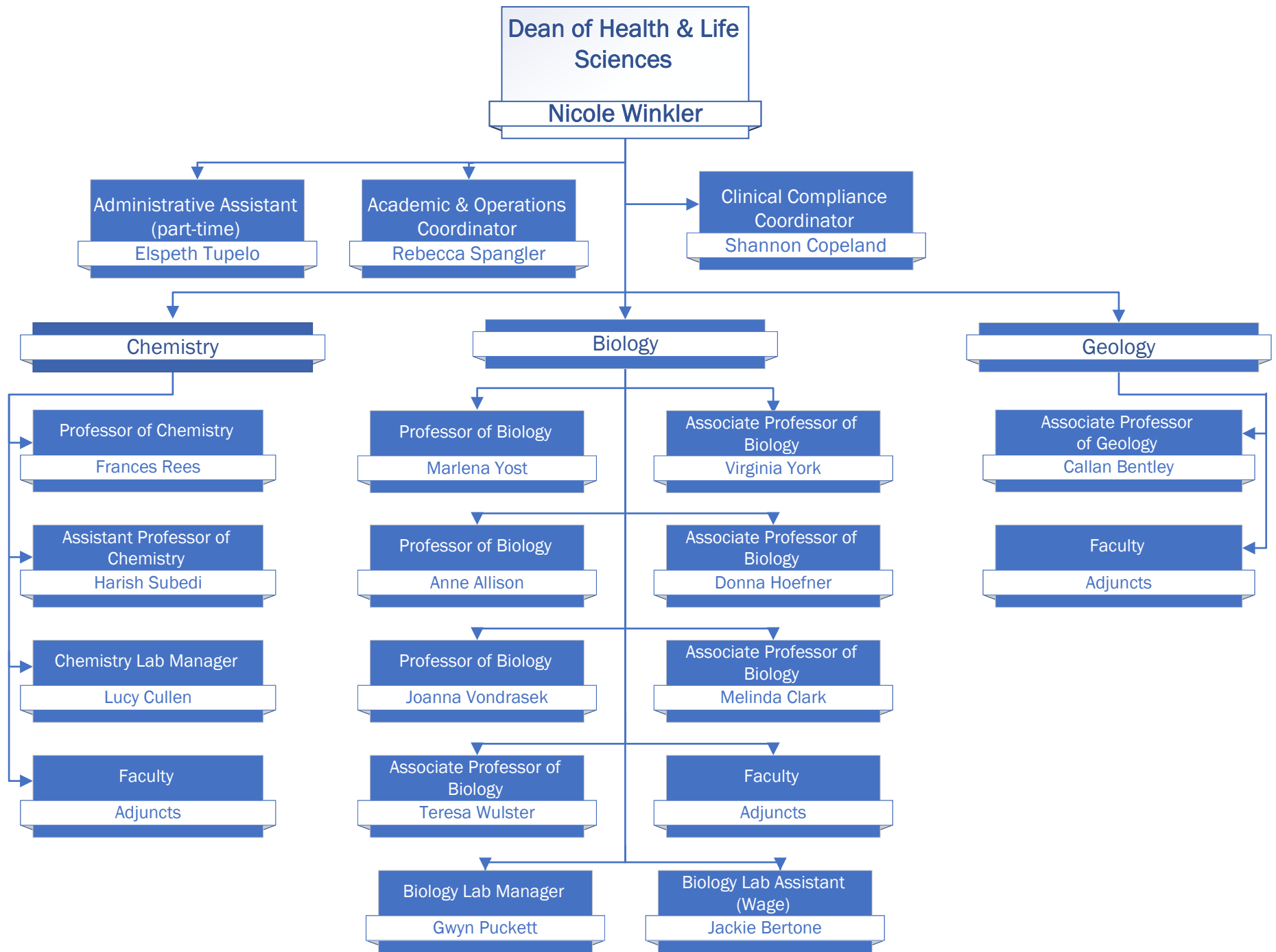
Dean of Business,  
Mathematics &  
Technologies  
**Olugbemiga Adekunle**

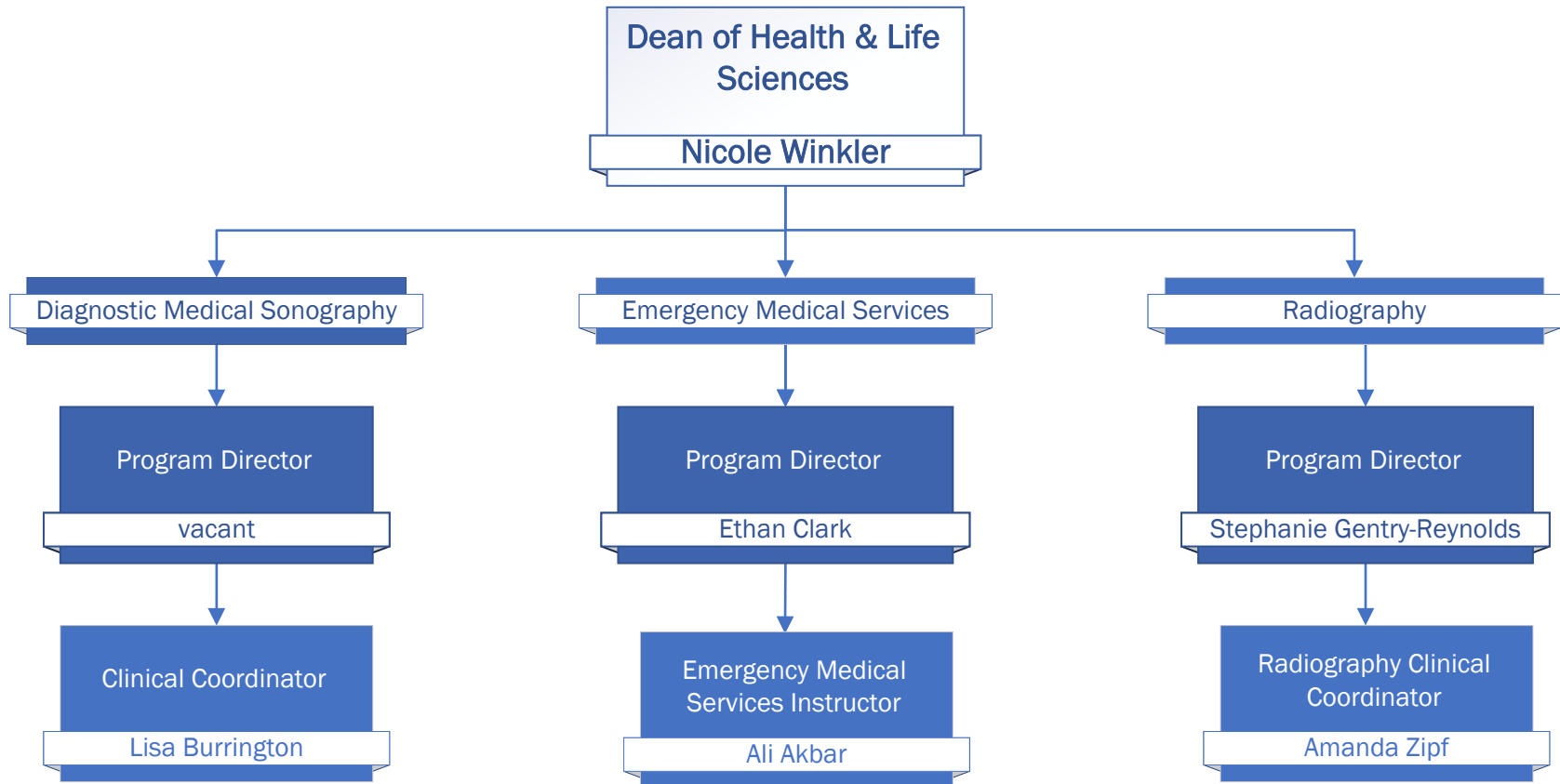


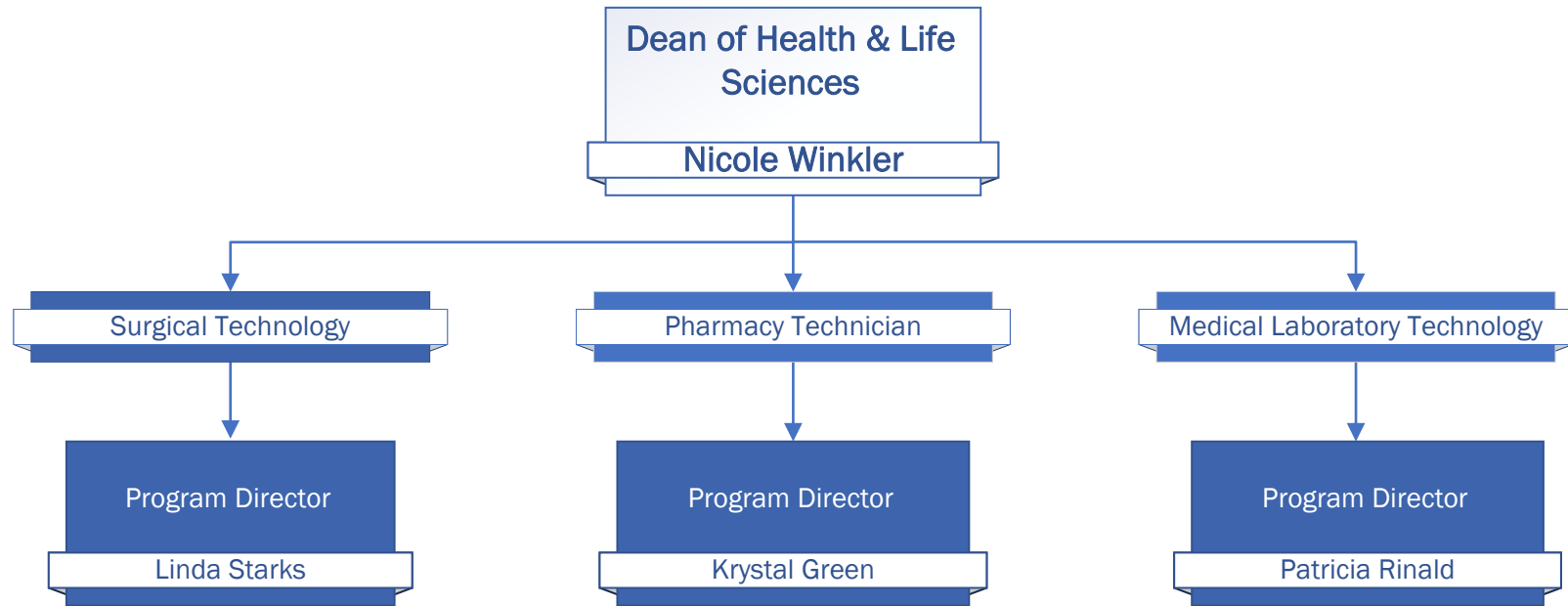
# Business, Mathematics & Technologies



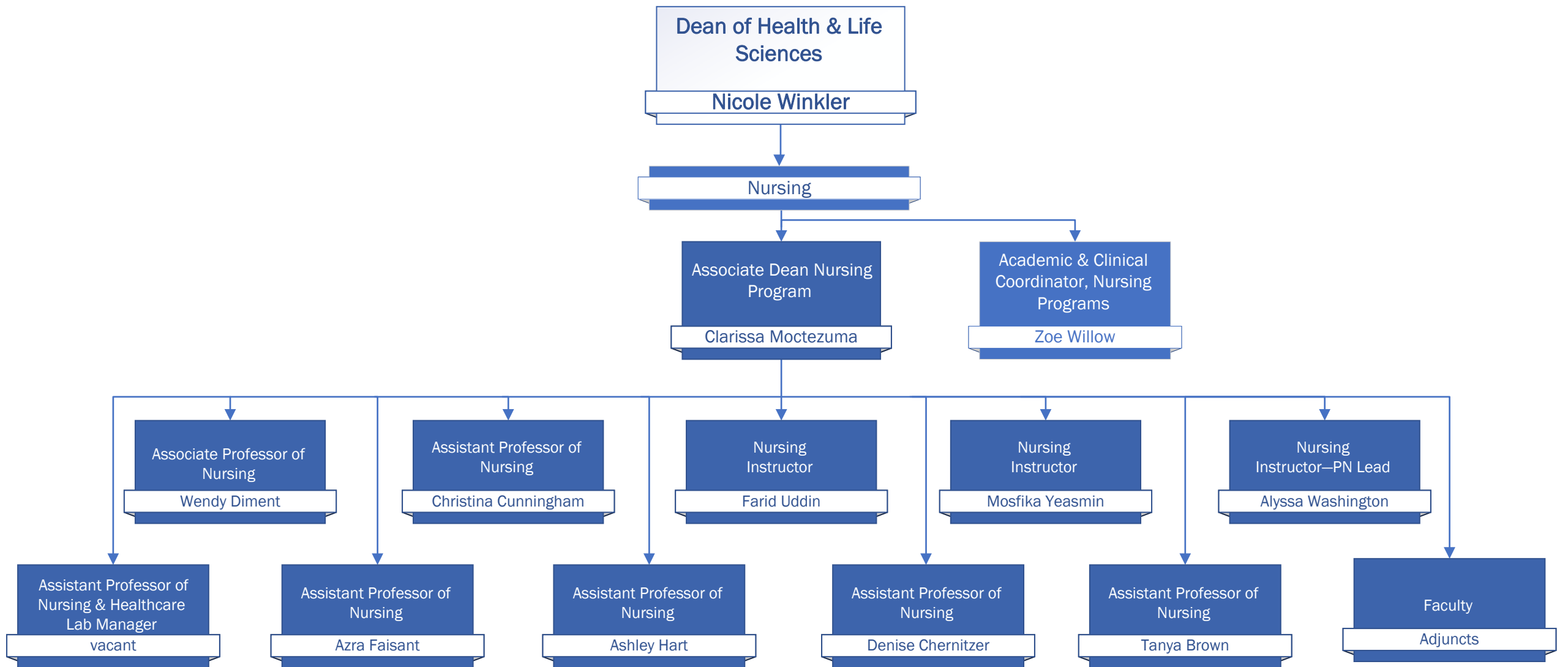
# Health & Life Sciences





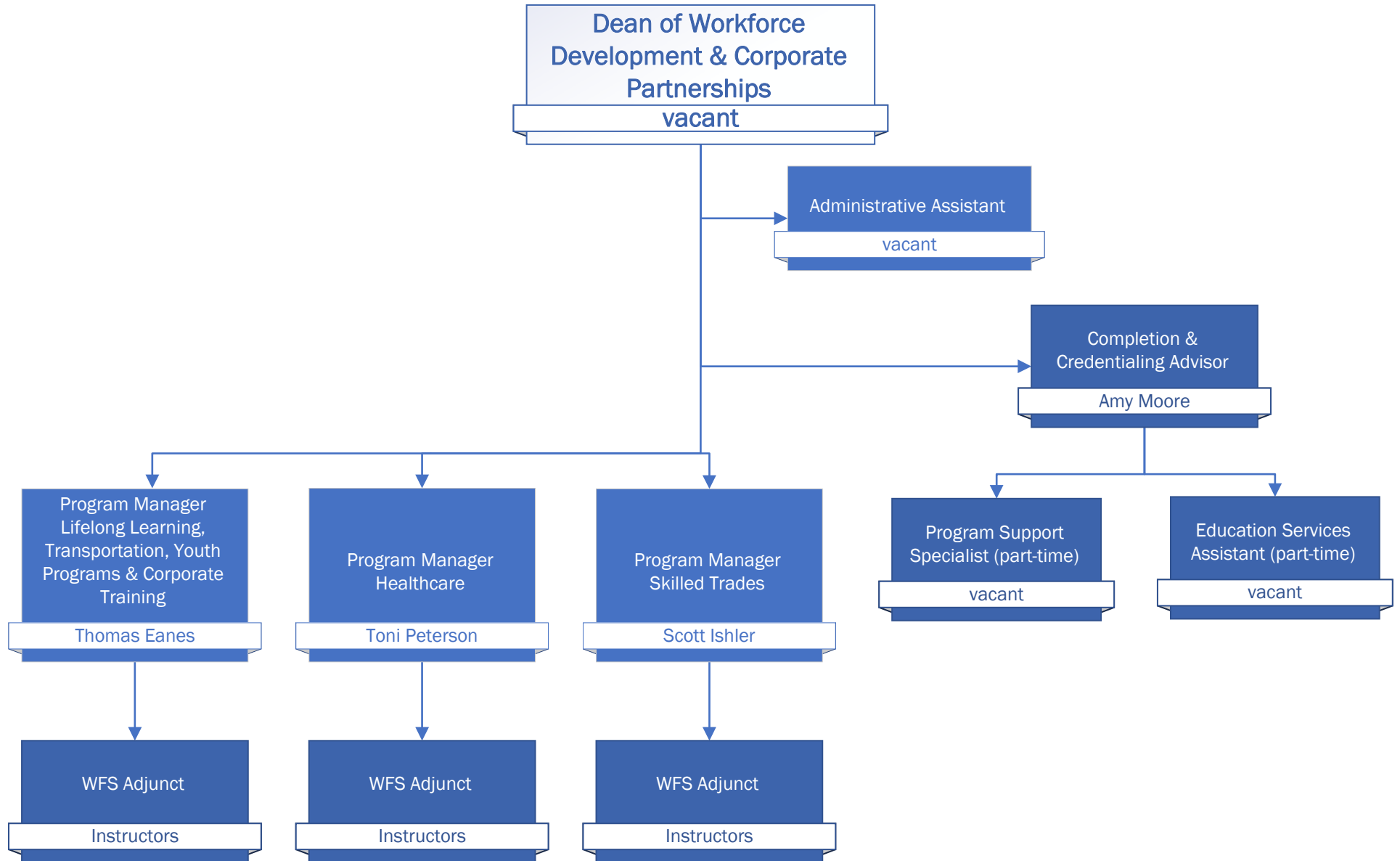


# Health & Life Sciences

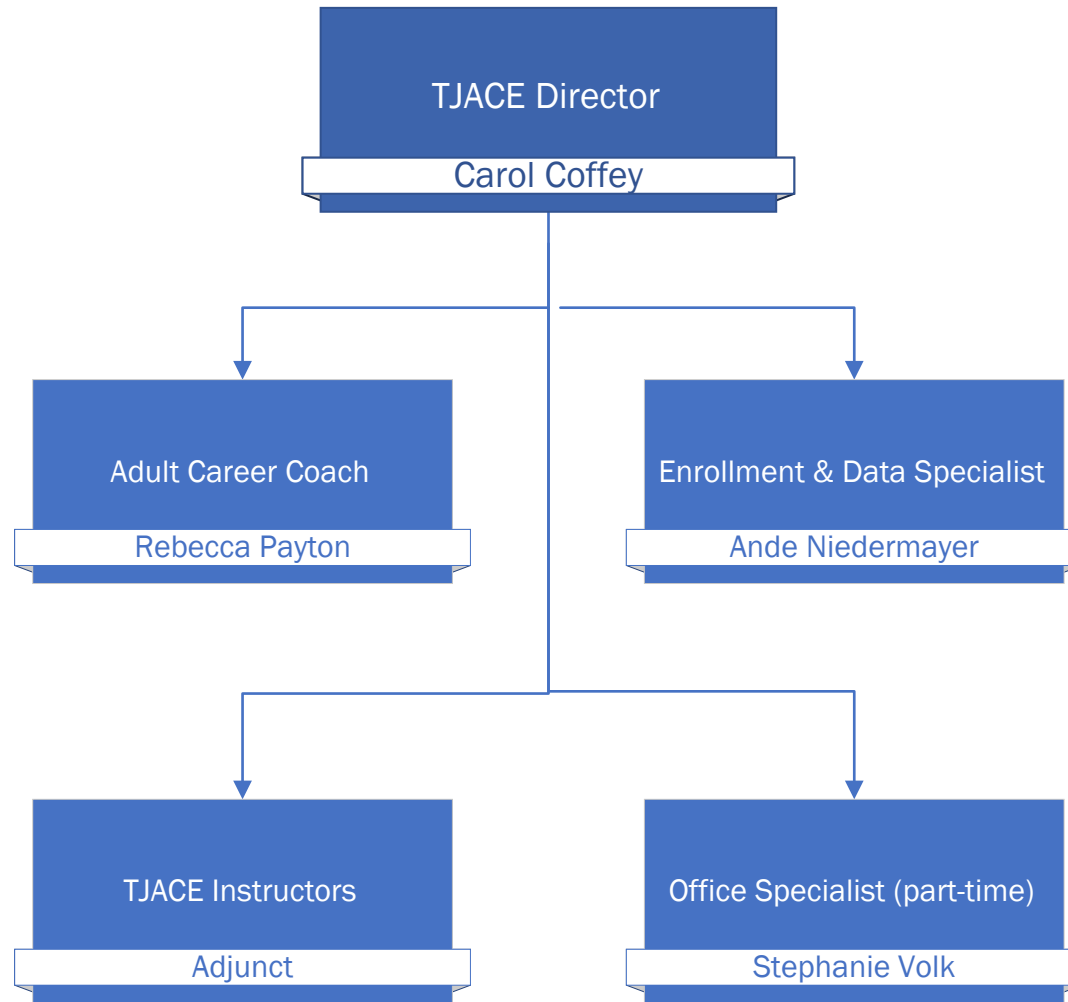




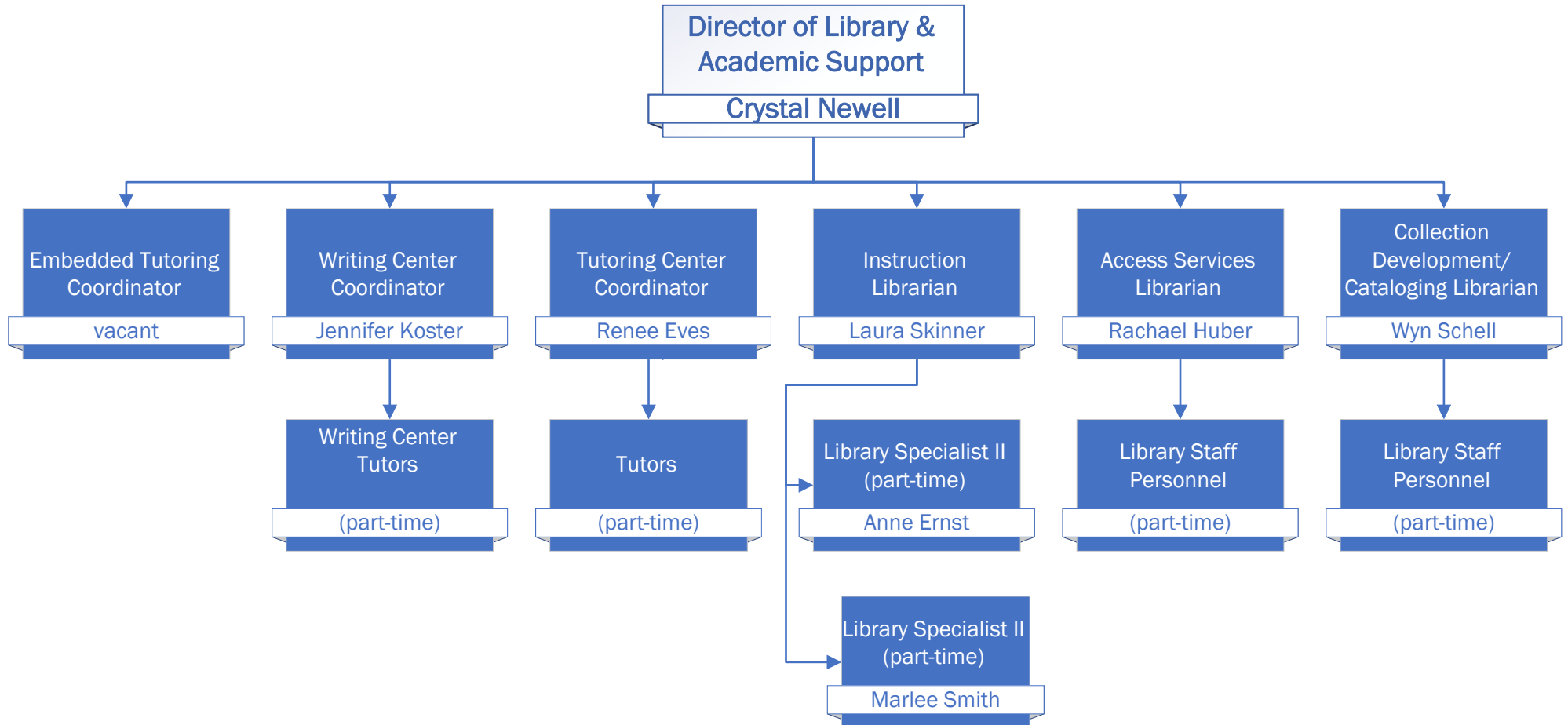
# Workforce Development

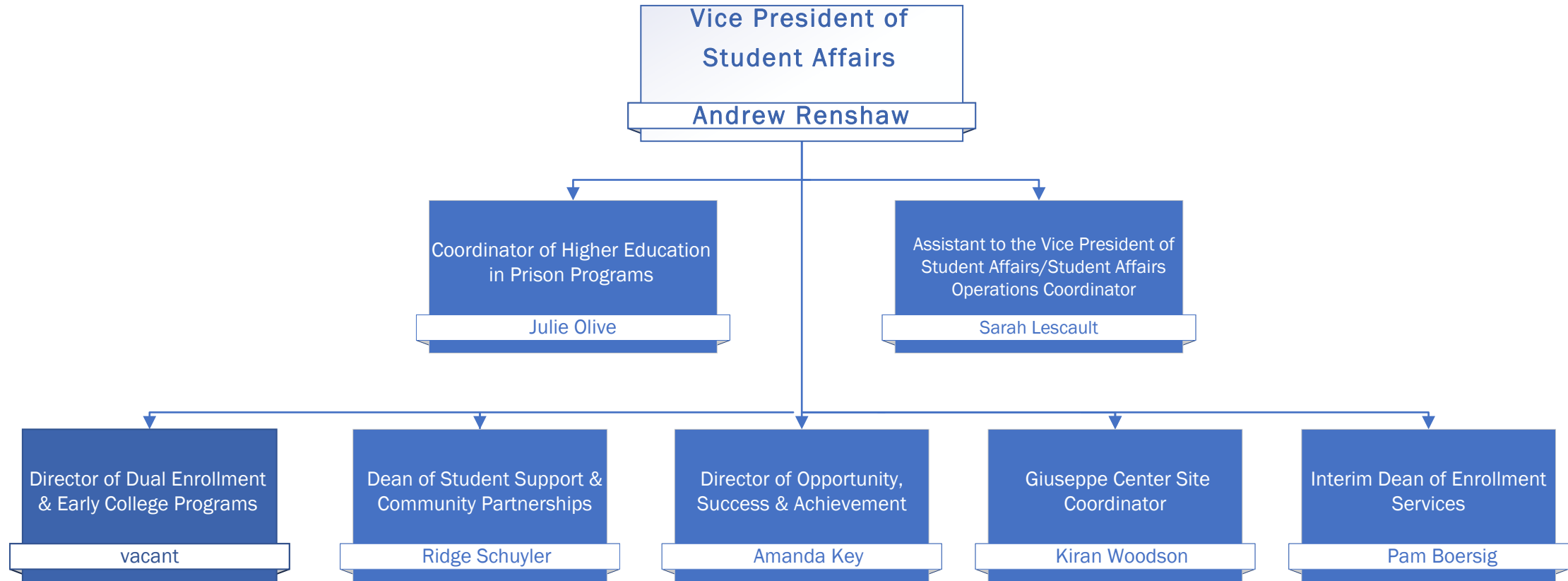


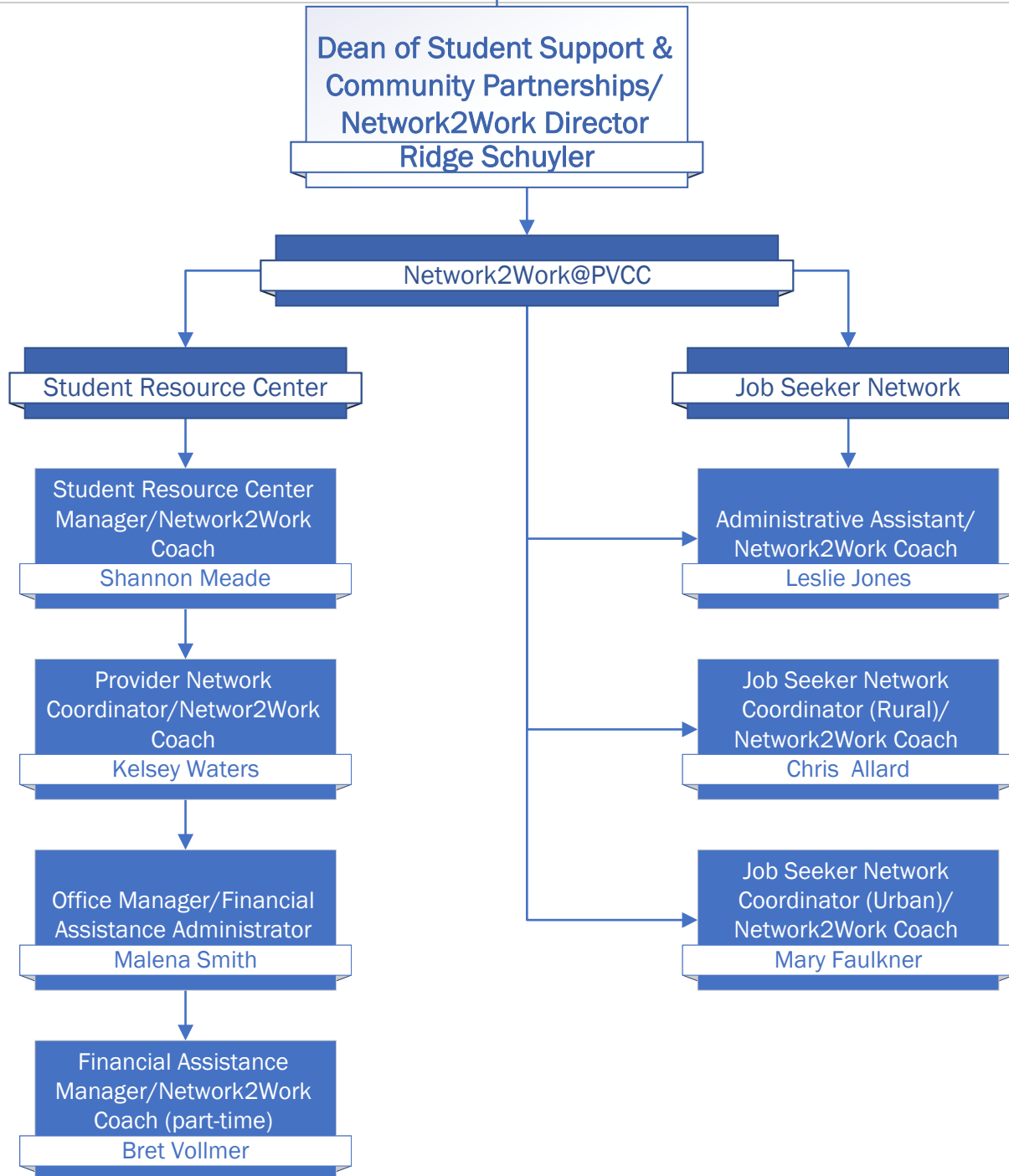
# Thomas Jefferson Adult & Career Education (TJACE)



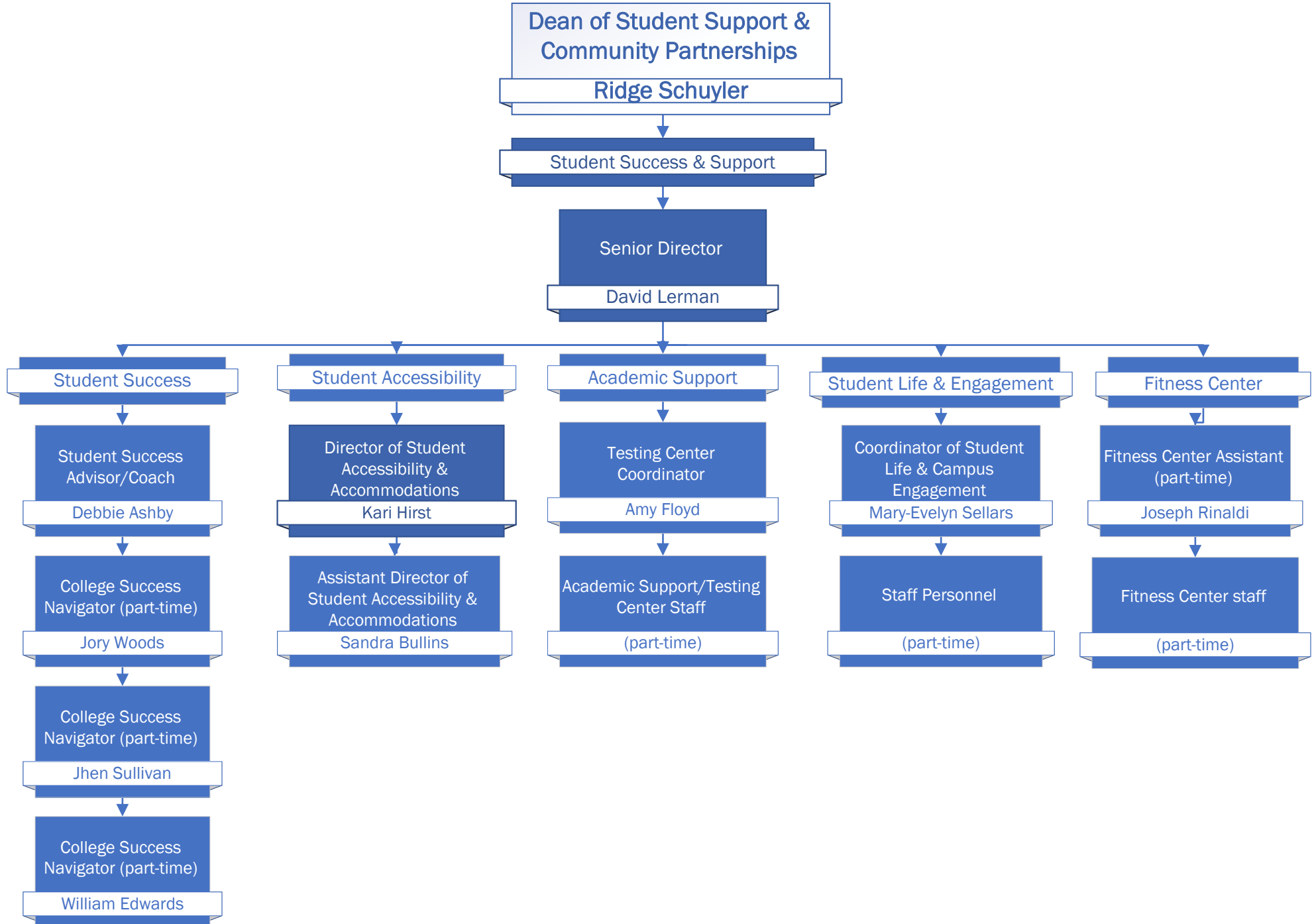
# Library and Academic Support



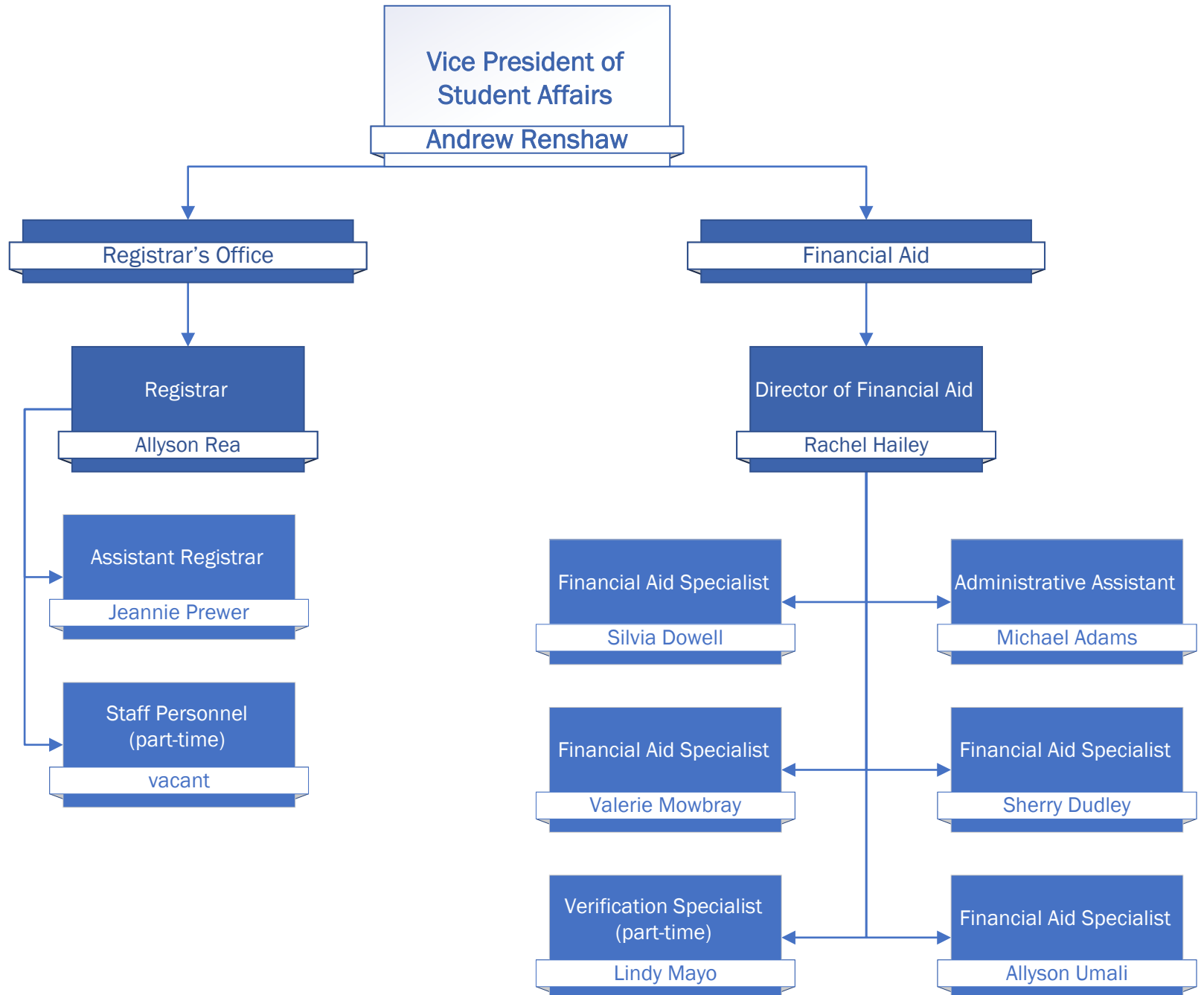




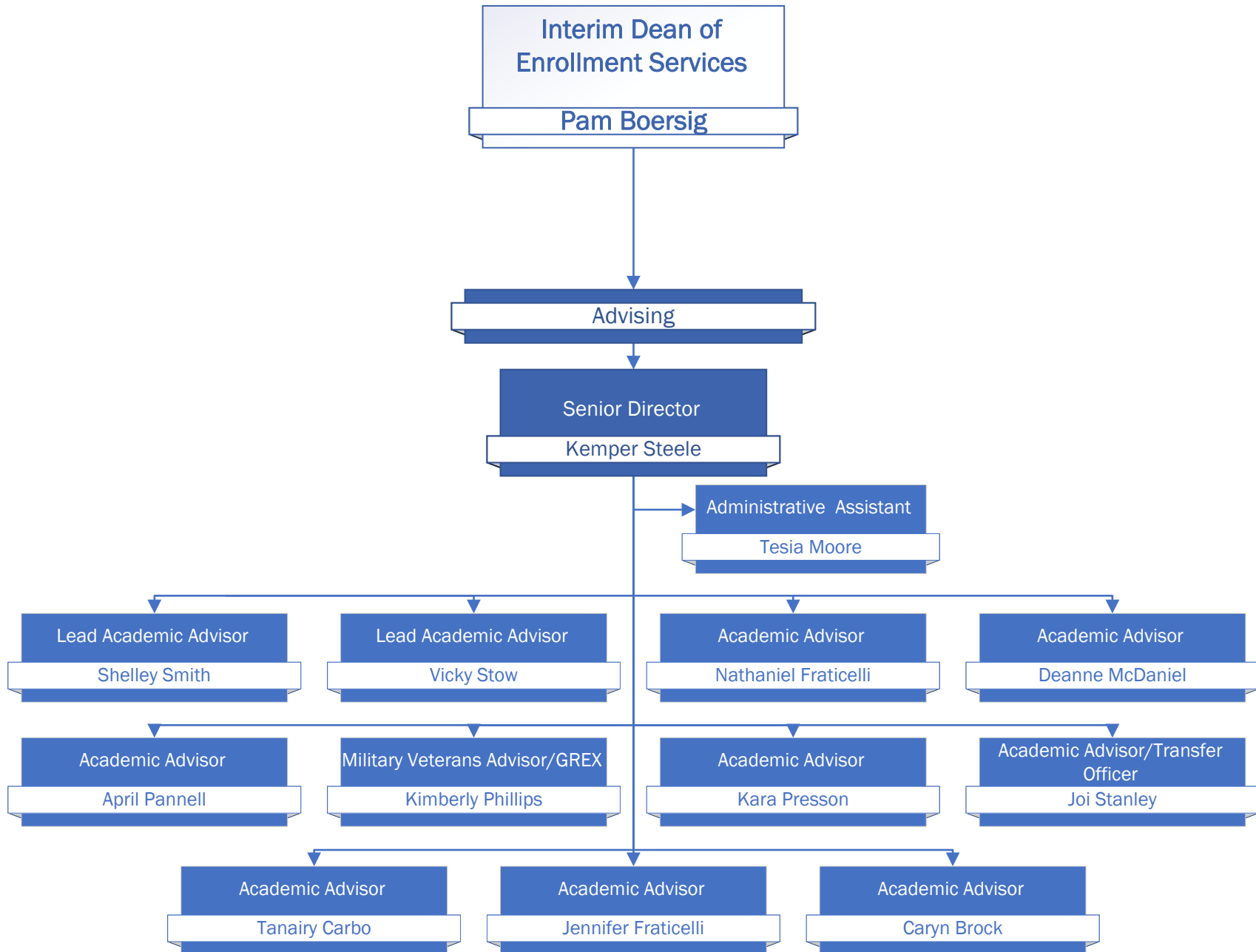
# Student Success & Support



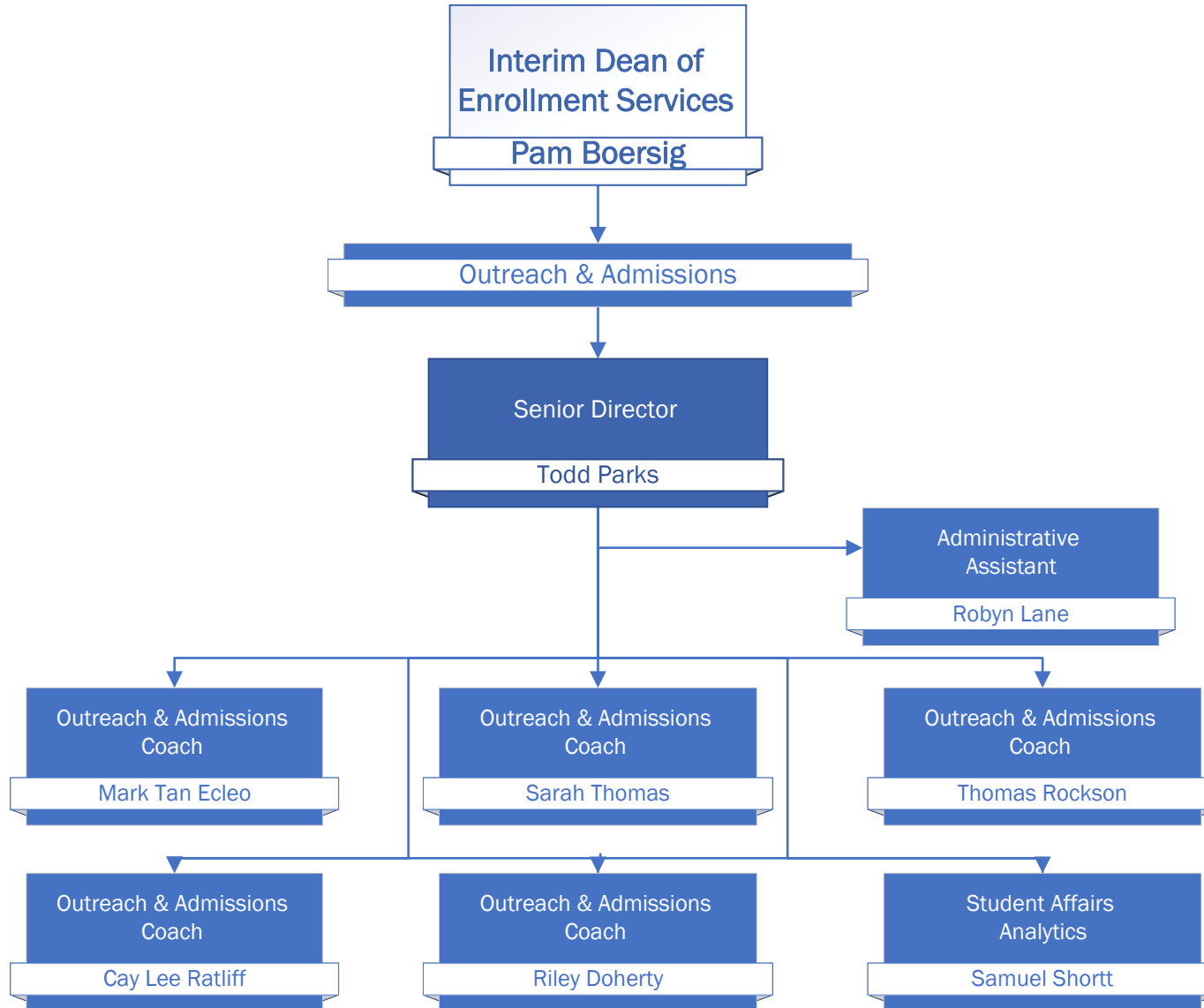
# Student Affairs



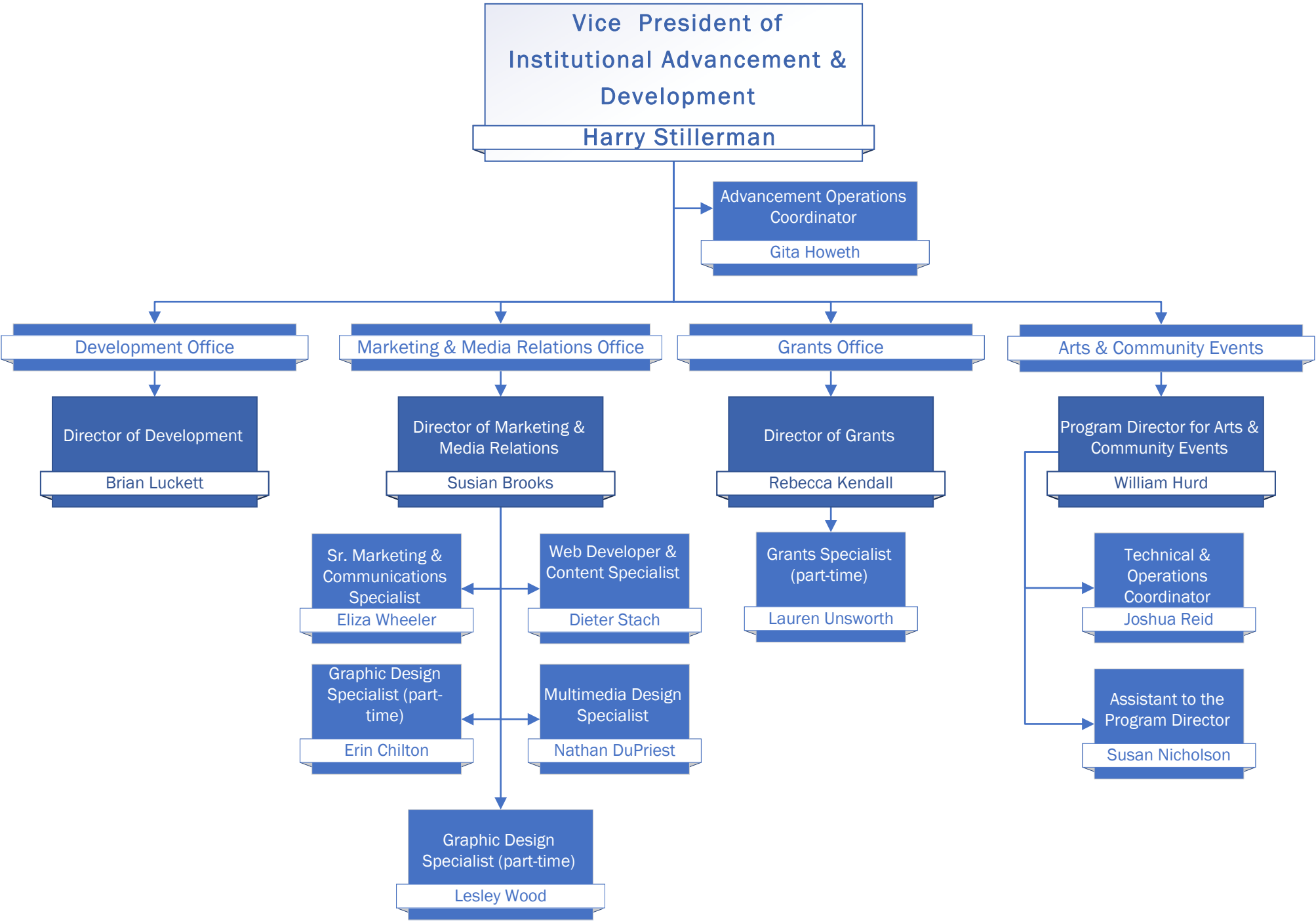
# Student Affairs







# Institutional Advancement & Development



# Technology Services

