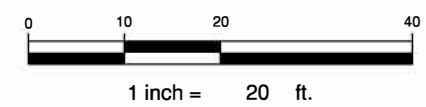
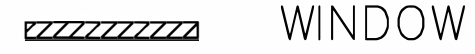


LEGEND:



P:\CV04100\CV04156\CV04156-22\CAD\CV04156-22-BASE.dwg August 20, 2013 12:05:22 PM



CLASSROOM EXHIBIT 2ND LEVEL DICKINSON BUILDING
PIEDMONT VA COMMUNITY COLLEGE, CHARLOTTESVILLE, VA

Draper Aden Associates
Engineering • Surveying • Environmental Services
700 Harris Street, Suite E
Charlottesville, VA 22903
434-295-0700 Fax: 434-295-2105
Blacksburg, VA
Richmond, VA
Hampton Roads, VA