

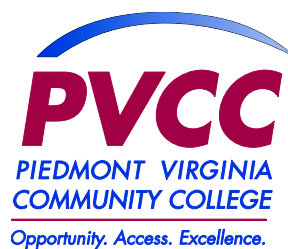
# Math Essentials Classes

## What Students Need to Know

### Additional Information

If you have questions about the new Math Essentials Classes, or would like additional information about registering, please see one of PVCC's academic advisors in the Admissions and Advising Center in room M144 of the Main Building.

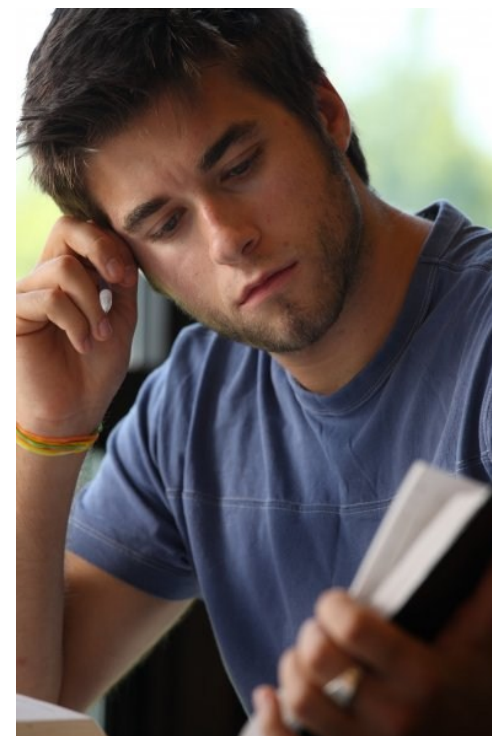
PVCC Admissions & Advising Center  
434.961.6551  
admissions@pvcc.edu



Admissions & Advising Center  
Piedmont Virginia Community College  
501 College Drive  
Charlottesville, VA 22902

Phone: 434.961.6551  
Email: admissions@pvcc.edu

[www.pvcc.edu](http://www.pvcc.edu)



## PVCC's New Developmental Math Program

PVCC's new developmental mathematics program started in the spring semester of 2012. This new program will help students progress faster through developmental mathematics classes.

The former developmental math classes — MTH 2, BSK 6, BSK 8, BSK 9 and MTH 4 — are replaced by nine one-credit *Math Essentials* (MTE) classes.

Students determine which MTE courses they need to take (if any) by taking the Virginia Placement Test (Math) and by considering their program of study. Students who already have a math credential (for example SAT score, Compass score, or college-level math course) should consult the Admissions and Advising Center.

MTE 1 -	Operations with Positive Fractions
MTE 2 -	Operations with Positive Decimals and Percents
MTE 3 -	Algebra Basics
MTE 4 -	First Degree Equations and Inequalities in One Variable
MTE 5 -	Linear Equations, Inequalities and Systems of Linear Equations in Two Variables
MTE 6 -	Exponents, Factoring and Polynomial Equations
MTE 7 -	Rational Expressions and Equations
MTE 8 -	Rational Exponents and Radicals
MTE 9 -	Functions, Quadratic Equations and Parabolas

## MTE Requirements for Degree and Certificate Programs\*

### Transfer Degrees

Business Administration.....	MTE 1-9
Computer Science .....	MTE 1-9
Education.....	MTE 1-5
Engineering.....	MTE 1-9
General Studies .....	MTE 1-5
Liberal Arts .....	MTE 1-5
Science.....	**MTE 1-6
Visual and Performing Arts .....	MTE 1-5

### Non-Transfer Degrees

Accounting.....	MTE 1-3
Diagnostic Medical Sonography.....	MTE 1-6
Electronics and Computer Technology.....	MTE 1-6
Emergency Medical Services.....	MTE 1-5
Information Systems Technology.....	MTE 1-6
Management.....	MTE 1-3
Nursing .....	MTE 1-5
Police Science .....	MTE 1-3
Radiography .....	MTE 1-5

### Certificates

Health Information Management.....	MTE 1-4
Practical Nursing.....	MTE 1-5
Surgical Technology .....	MTE 1-5

Students should check the MTE and MTH requirements for any science with lab courses they may need to take.

\* Students may need to take further MTE courses if they decide to take higher-level math courses than those required within their degree.

\*\* For the A.S. degree in Science many students will need MTE 1-9 depending on their choice of math and lab science classes

## Class Schedule

Each class is four weeks long. Students may take up to three MTE classes per semester.

## Class Format

Each MTE class has a required computer lab component. Students will use a computer system called Hawkes Learning System, in the lab and for homework. This system is available in PVCC computer labs and it can be used by students on their own computers.

## Prerequisites

Students enrolling in the following math classes will have met the corresponding class prerequisites:

<u>Class</u>	<u>Prerequisites</u>
MTH 120	MTE 1 – MTE 3
MTH 115	MTE 1 – MTE 6
MTH 152	MTE 1 – MTE 5
MTH 157	MTE 1 – MTE 5
MTH 163	MTE 1 – MTE 9
MTH 180	MTE 1 – MTE 9

## Financial Aid

Students receiving financial aid must enroll at the beginning of the semester in all developmental math classes they plan to take during the semester.

PVCC Financial Aid  
Room M136 in the Main Building  
434.961.6545  
finaid@pvcc.edu