

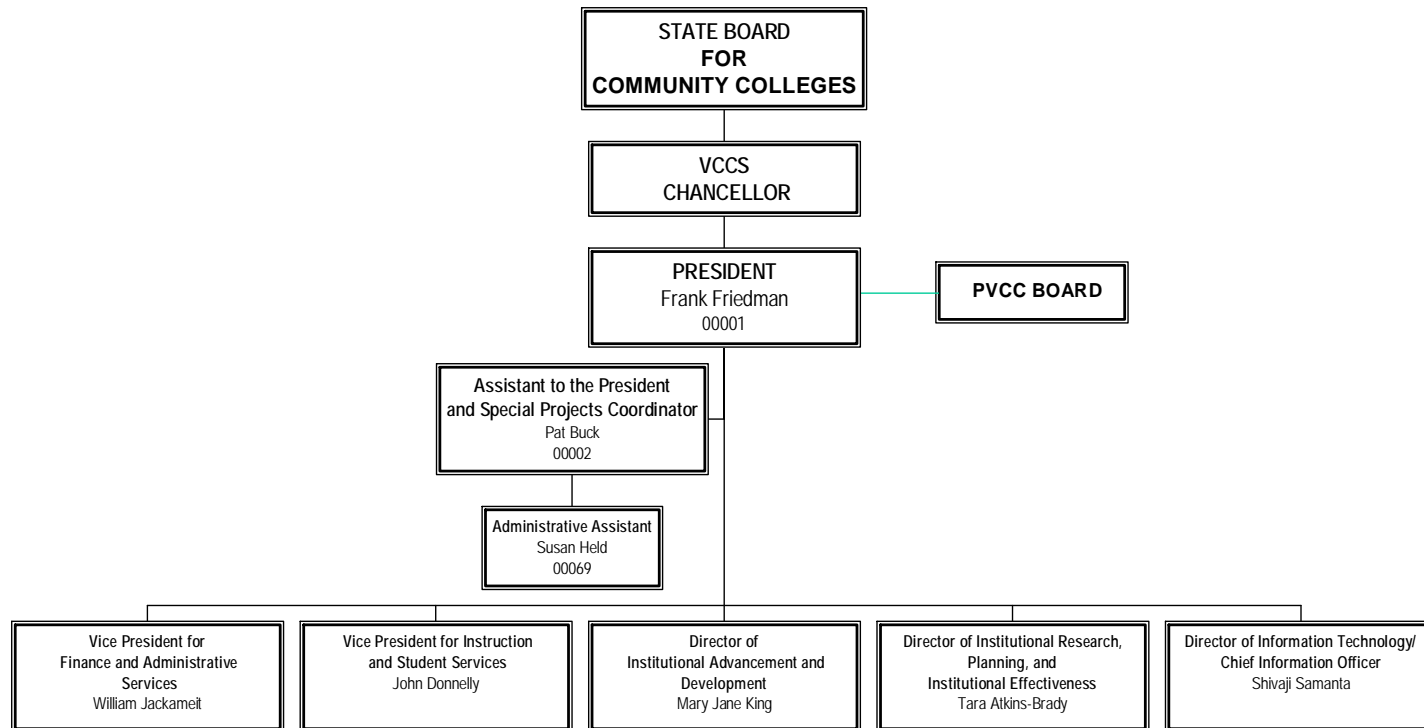
ORGANIZATION CHARTS



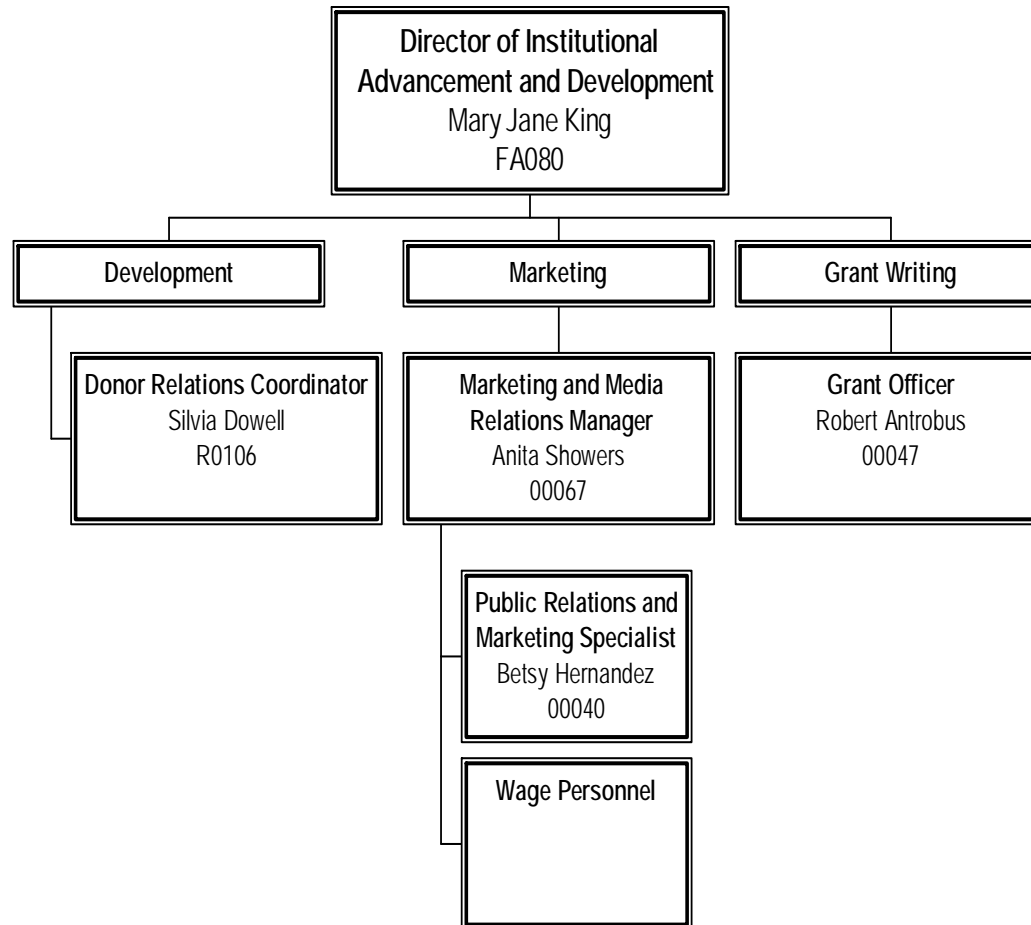
TABLE OF CONTENTS

President's Staff College Leadership Team Page 3				
Institutional Advancement and Development Page 4	Institutional Research, Planning, and Institutional Effectiveness Page 5	Information Technology Page 6	Vice President for Finance and Administrative Services Page 7	Vice President for Instruction and Student Services Page 11
			Contracted Services Page 7	Academic and Carey Expressway (ACE) Page 12
			Business Office Page 8	Student Services Page 13
			Human Resources Page 9	Library Services Page 14
			Facilities Page 10	Instructional Technology Design Page 15
				Workforce Services Page 16
				Business, Mathematics and Technologies Page 17
				Humanities, Fine Arts and Social Sciences Page 18
				Health and Life Sciences Page 19

PRESIDENT'S STAFF COLLEGE LEADERSHIP TEAM



INSTITUTIONAL ADVANCEMENT AND DEVELOPMENT



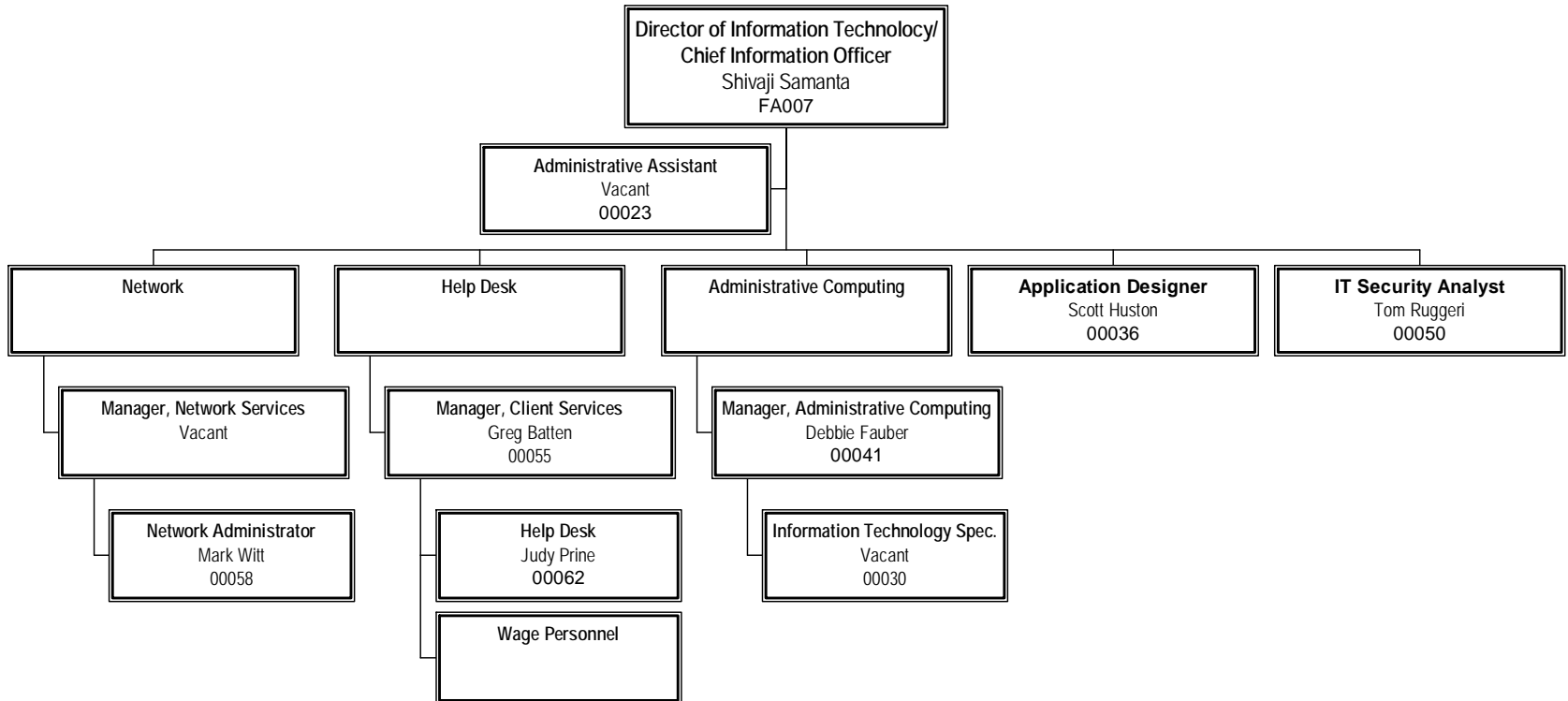
INSTITUTIONAL RESEARCH, PLANNING, AND INSTITUTIONAL EFFECTIVENESS

Director of Institutional Research,
Planning, and Institutional Effectiveness

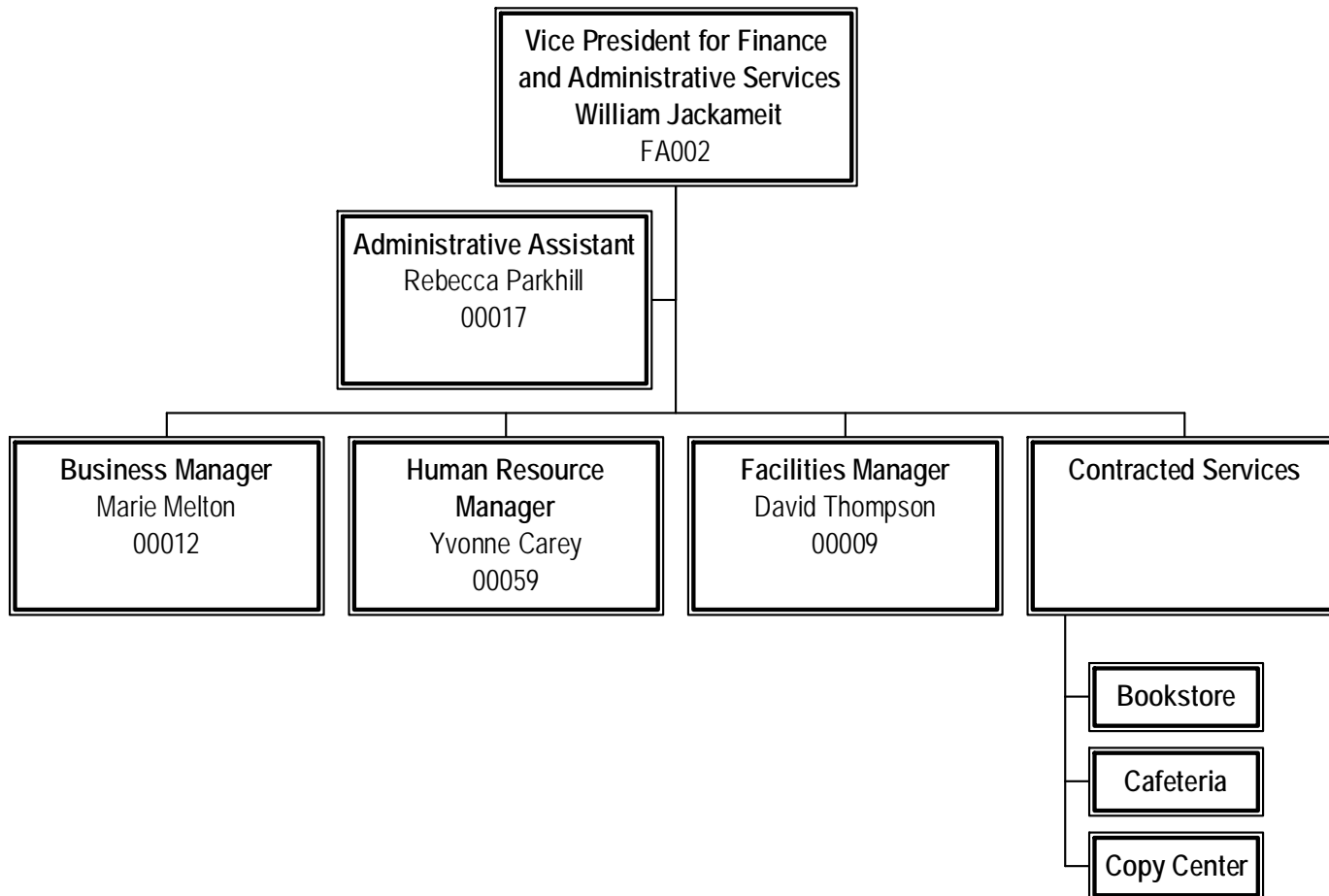
Tara Atkins-Brady
FA034

Research Analyst
Rachel Boren

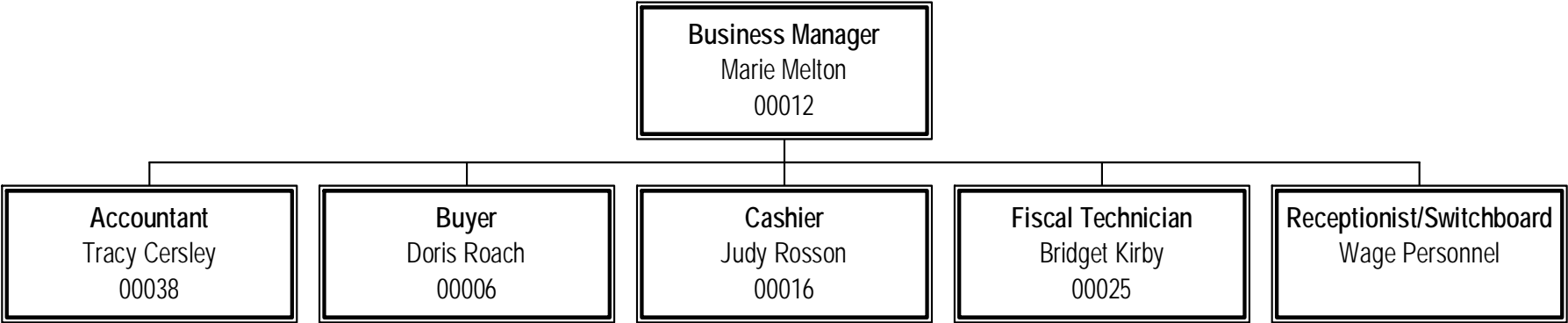
INFORMATION TECHNOLOGY



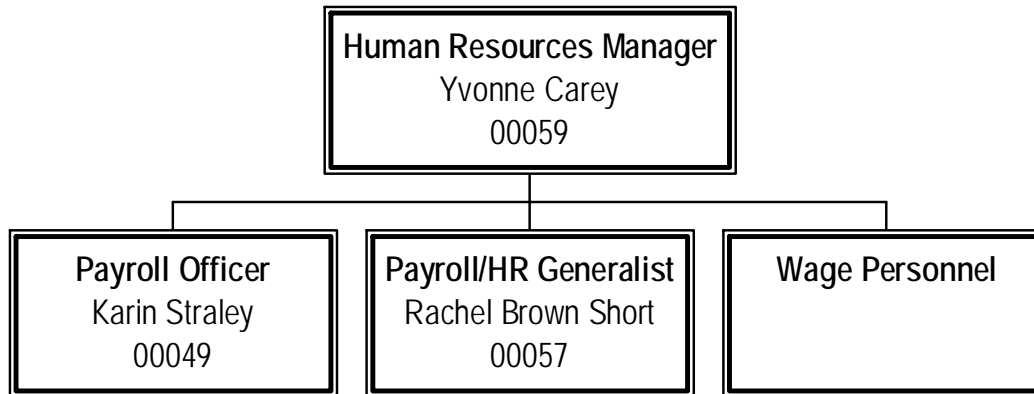
VICE PRESIDENT FOR FINANCE AND ADMINISTRATIVE SERVICES



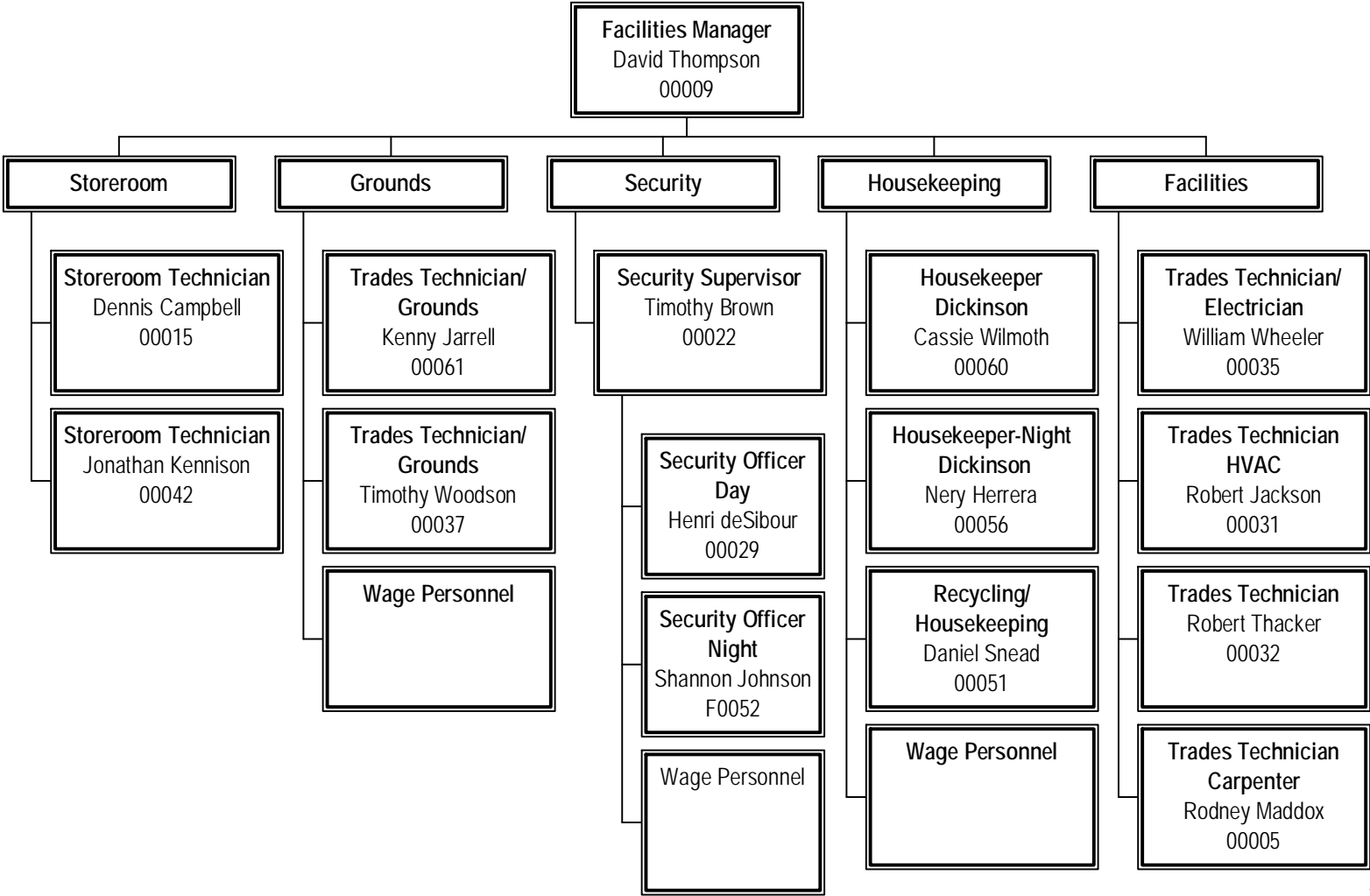
BUSINESS OFFICE



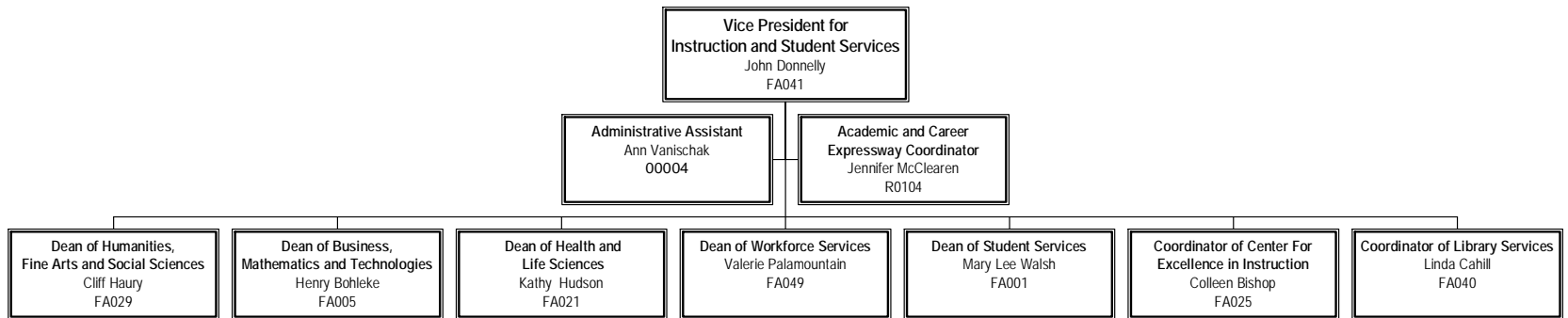
HUMAN RESOURCES



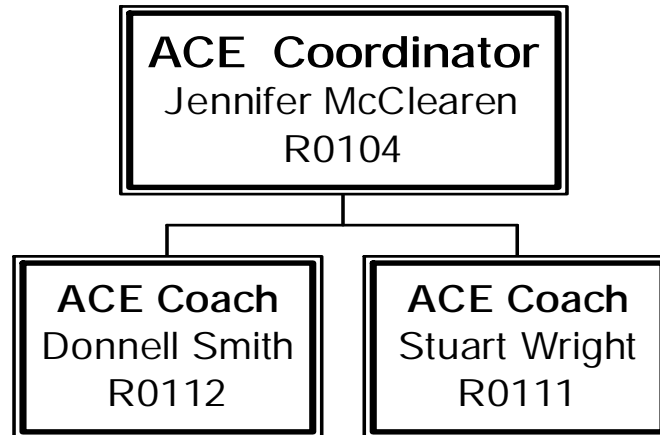
FACILITIES



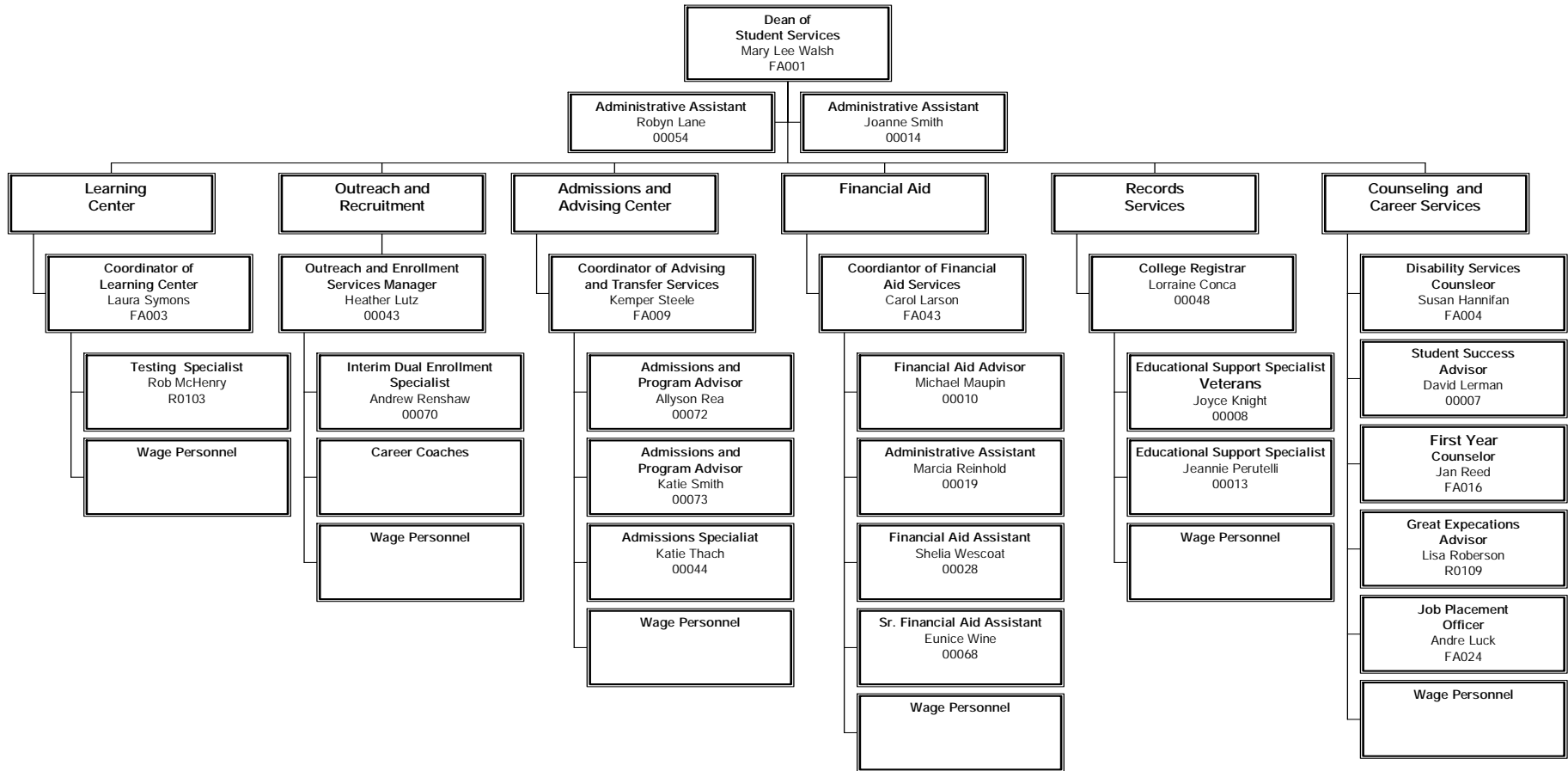
VICE PRESIDENT FOR INSTRUCTION AND STUDENT SERVICES



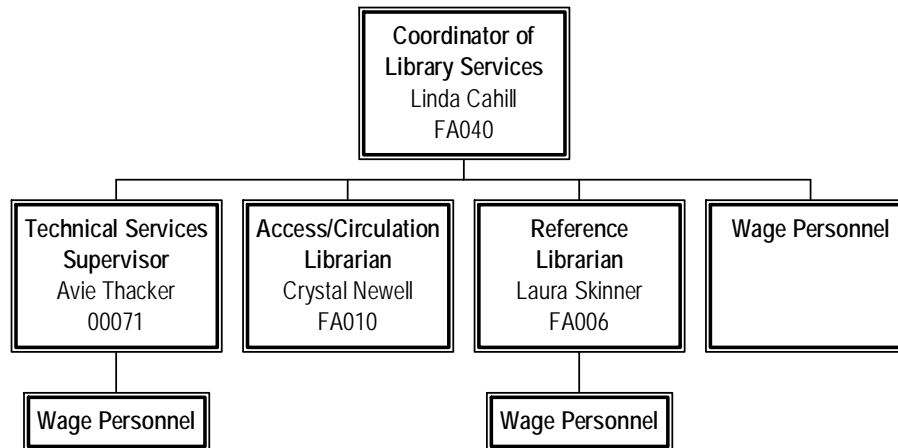
ACADEMIC AND CAREER EXPRESSWAY (ACE)



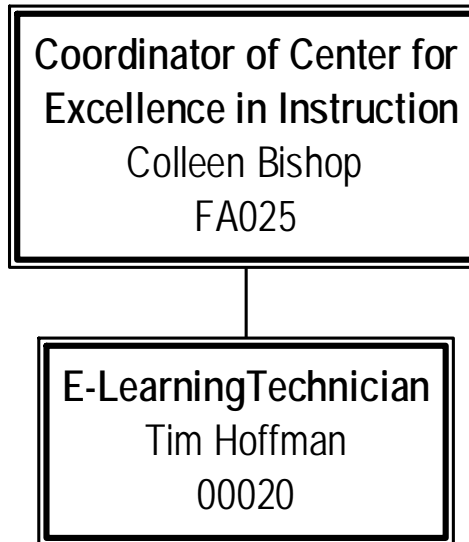
STUDENT SERVICES



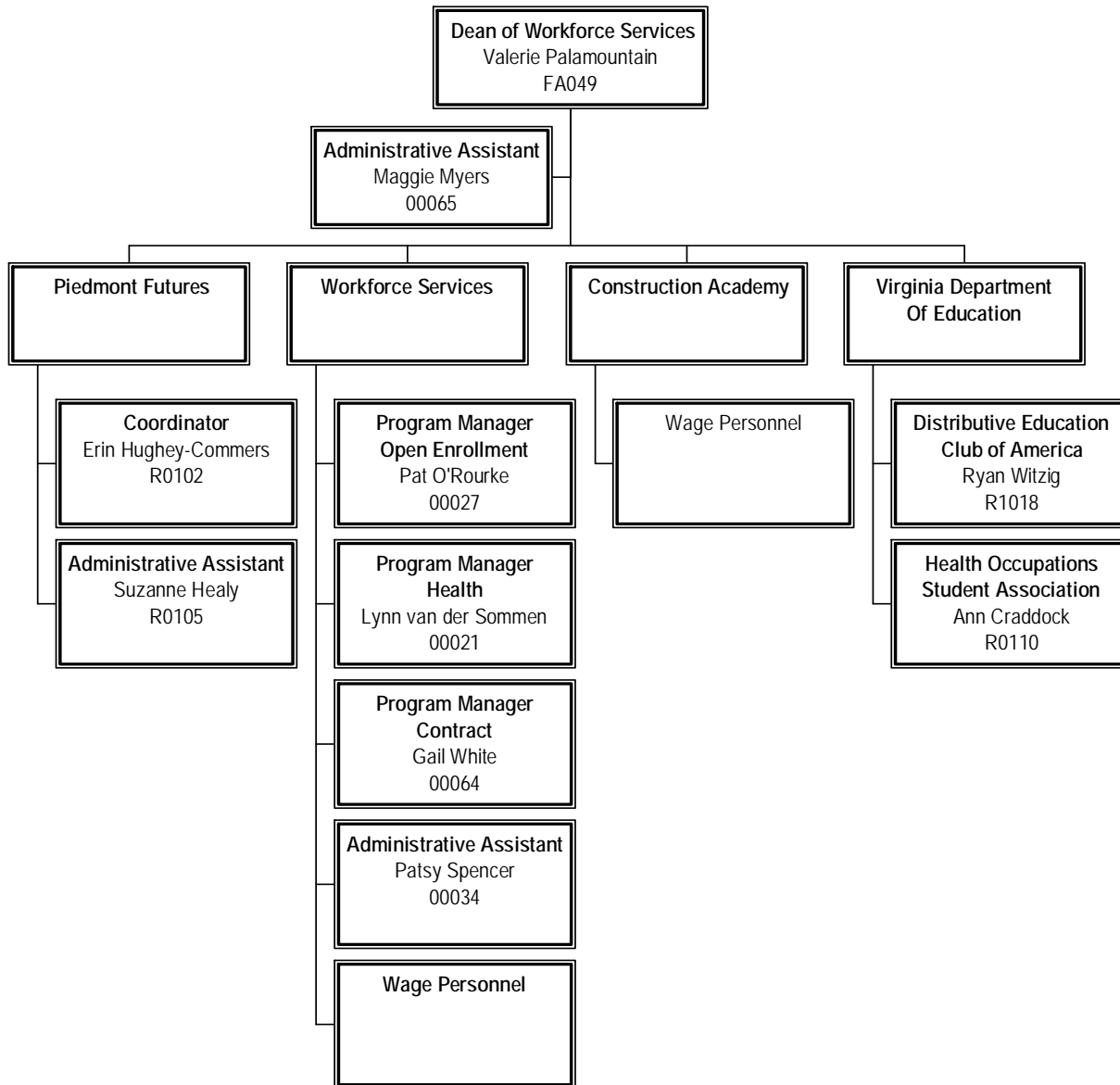
LIBRARY SERVICES



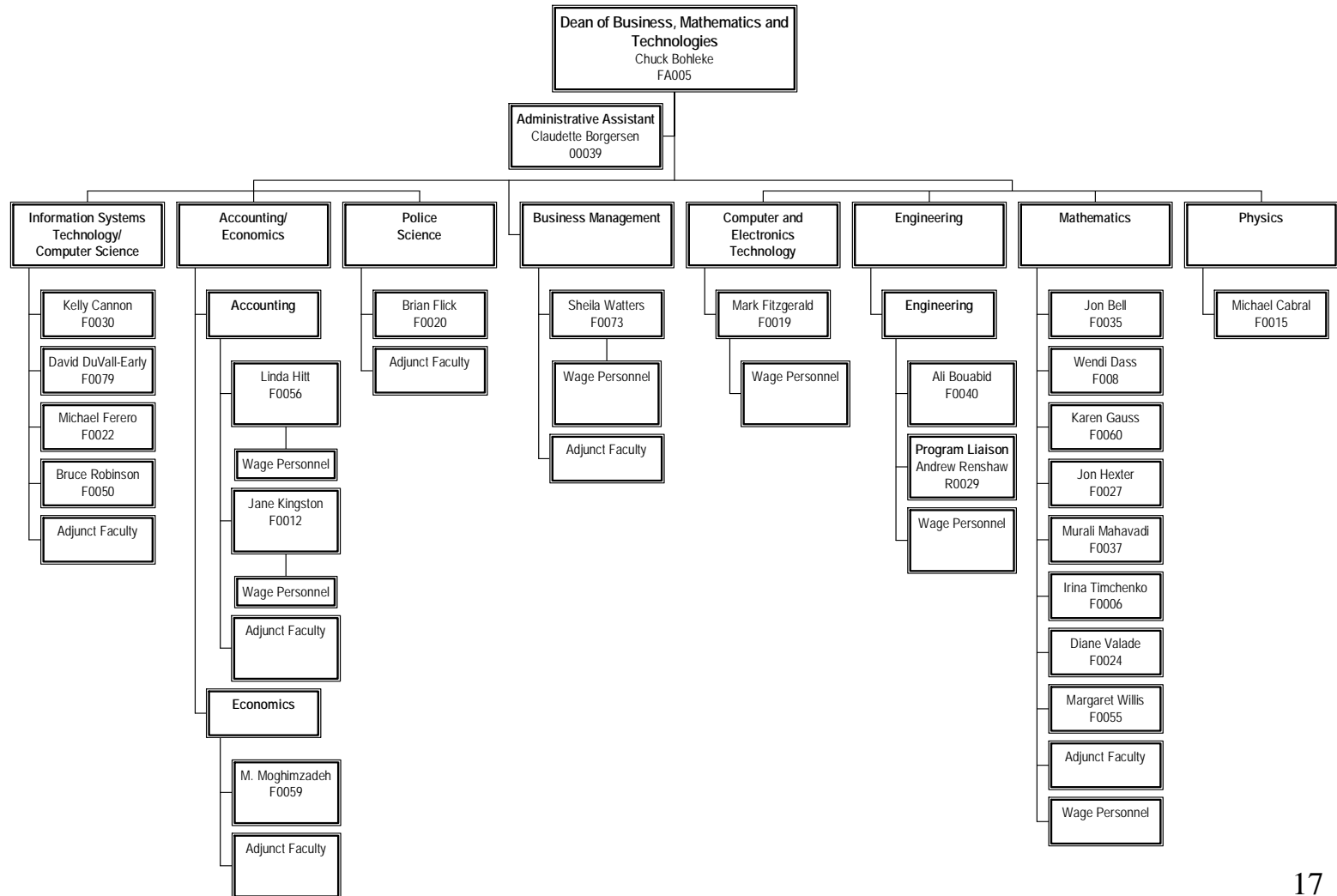
INSTRUCTIONAL TECHNOLOGY DESIGN



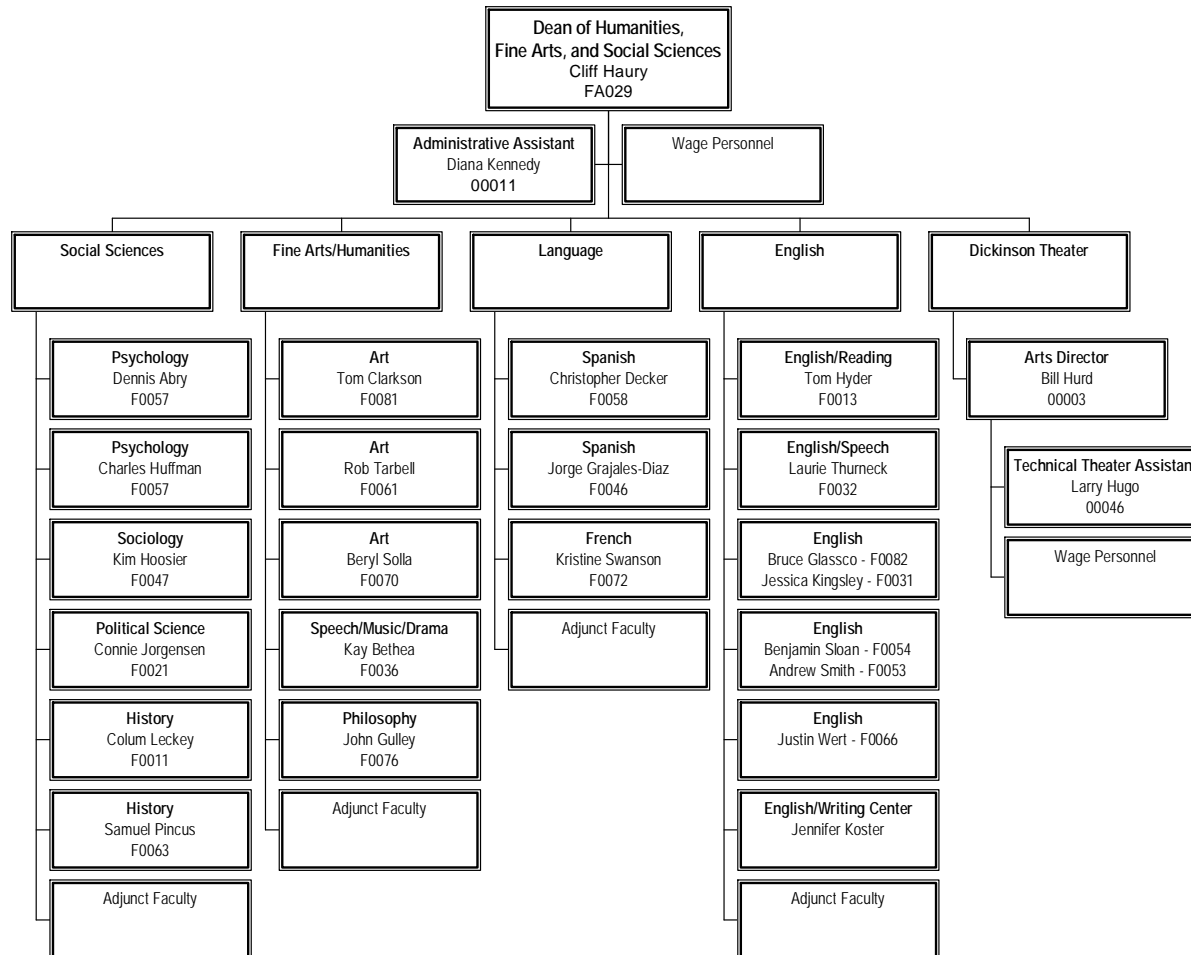
WORKFORCE SERVICES



BUSINESS, MATHEMATICS AND TECHNOLOGIES



HUMANITIES, FINE ARTS AND SOCIAL SCIENCES



HEALTH AND LIFE SCIENCES

